



15405/177-219 Mitchell Road ERSKINEVILLE NSW

2 🛏 2 🚿 1 🚗

Situated in the newest stage of Sydney Park Village & enjoying a prized private West-facing position, this beautifully presented two-bedroom apartment offers a wonderful sense of space, warmth, & everyday comfort within one of the Inner West's most sought-after communities. Thoughtfully updated & ready to enjoy, the home feels inviting from the moment you step inside, w/ leafy outlooks, natural light & a layout designed for easy living. At the heart of the home, a statement designer kitchen is finished to an exceptional standard, combining style & functionality for everyday living & effortless entertaining. Premium Siemens IQ700 appliances include a built-in oven w/ microwave, induction cooktop & rangehood, while fully integrated Liebherr refrigeration & an oversized dishwasher drawer are seamlessly concealed within

Type : Apartment
Price : Auction
Building Size : 112 sqm
Land Size : 112 sqm
View : <https://www.parkproperties.com.au/sale/nsw/inner-west/erskineville/residential/apartment/8687159>

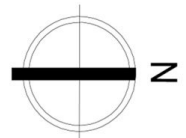
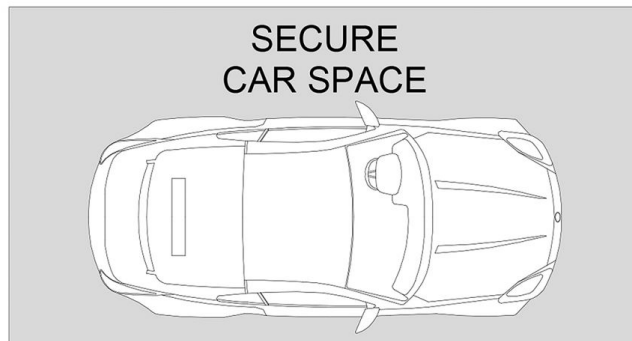
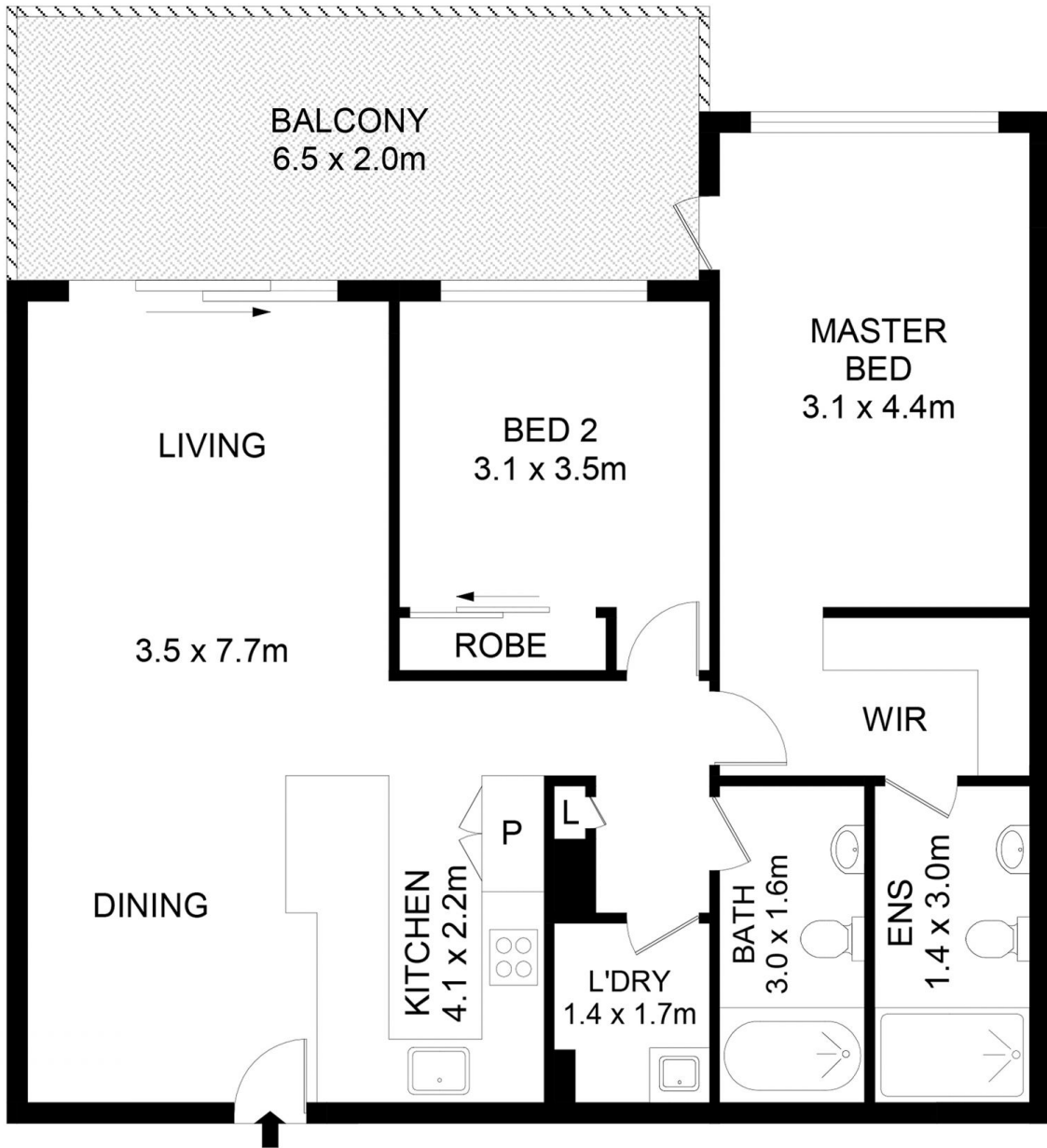


Melissah McCaffery J P
02 9565 5333



Michael McCaffery
02 9565 5333

[For full version visit the website](https://www.parkproperties.com.au)



Disclaimer

Floor Plan measurements are approximate and are for illustrative purposes only. While we cannot doubt the floor plans accuracy, we make no guarantee, warranty or representation as to the accuracy and completeness of the floor plan