



10502/177-219 Mitchell Road ERSKINEVILLE NSW

2  2  1 

Showcasing one of the most sought-after floorplans in the complex w/ a desirable corner aspect featuring additional windows, this beautifully presented North-West facing apartment is thoughtfully designed w/ light-filled, wide open-plan living & dining areas & the rare advantage of separated bedrooms & bathrooms for enhanced privacy & functionality. Set within the highly desirable Sydney Park Village & surrounded by lush, landscaped grounds, it offers an exceptional opportunity to enjoy resort-style living in the heart of Erskineville. Step inside to a spacious, sunlit lounge & dining space that flows seamlessly to a large entertainer's balcony-ideal for alfresco dining, weekend gatherings, or relaxing w/ peaceful views of the manicured gardens - featuring quality finishes throughout & a smart, functional layout, this home is perfect for families,

| | |
|----------------------|---|
| Type | : Apartment |
| Price | : Auction |
| Building Size | : 122 sqm |
| Land Size | : 122 sqm |
| View | : https://www.parkproperties.com.au/sale/nsw/inner-west/erskineville/residential/apartment/8362753 |



Melissah McCaffery J P
0295655333

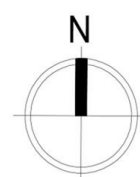
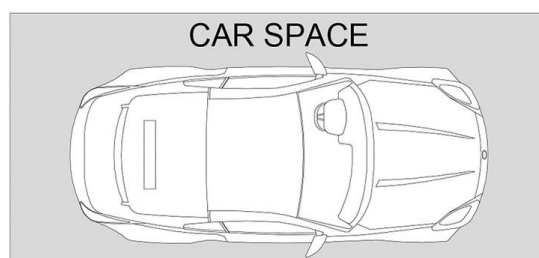
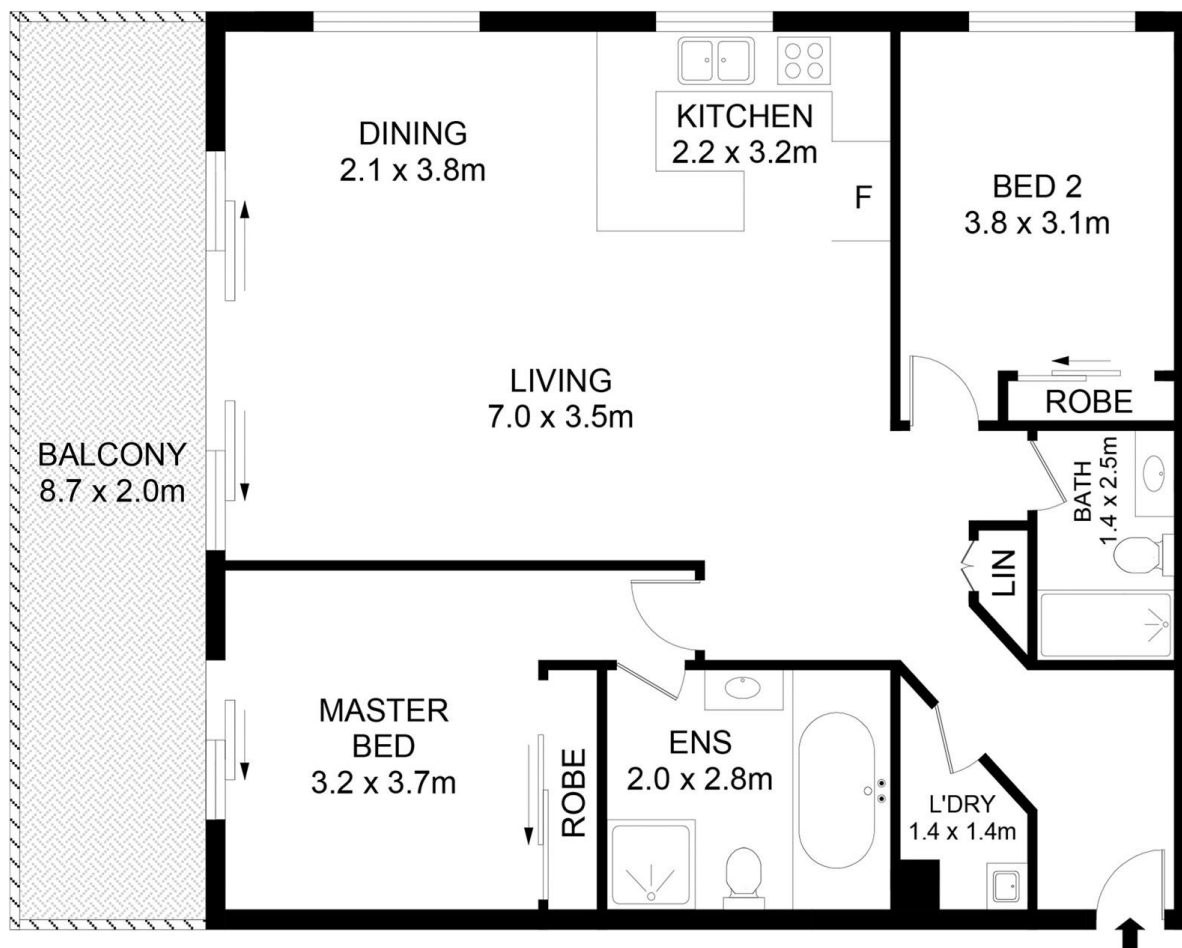


Michael McCaffery
0295655333

[For full version visit the website](https://www.parkproperties.com.au)

<https://www.parkproperties.com.au>

SHOP 3/177-219 MITCHELL ROAD, ERSKINEVILLE
0295655333



Disclaimer

Floor Plan measurements are approximate and are for illustrative purposes only. While we cannot doubt the floor plans accuracy , we make no guarantee , warranty or representation as to the accuracy and completeness of the floor plan