



**15208/177-219 Mitchell Road Erskineville NSW**

1  1  1 

Positioned in a highly prized setting & complemented w/ resort-style amenities, this apartment boasts a wide, spacious, open plan design w/ light filled modern interiors throughout. Featuring a wide design w/ an internal facing full width terrace & private outlook w/ views overlooking the complex grounds, manicured gardens, tennis courts & pool - this is the perfect first start, downsize or lucrative investment.

Double brick & quality building  
Floor to ceiling glass sliding doors enabling an abundance of natural light  
Spacious, light filled open plan living & dining area  
East facing, full-width balcony w/ impressive outlook over the complex grounds

[For full version visit the website](https://www.parkproperties.com.au)

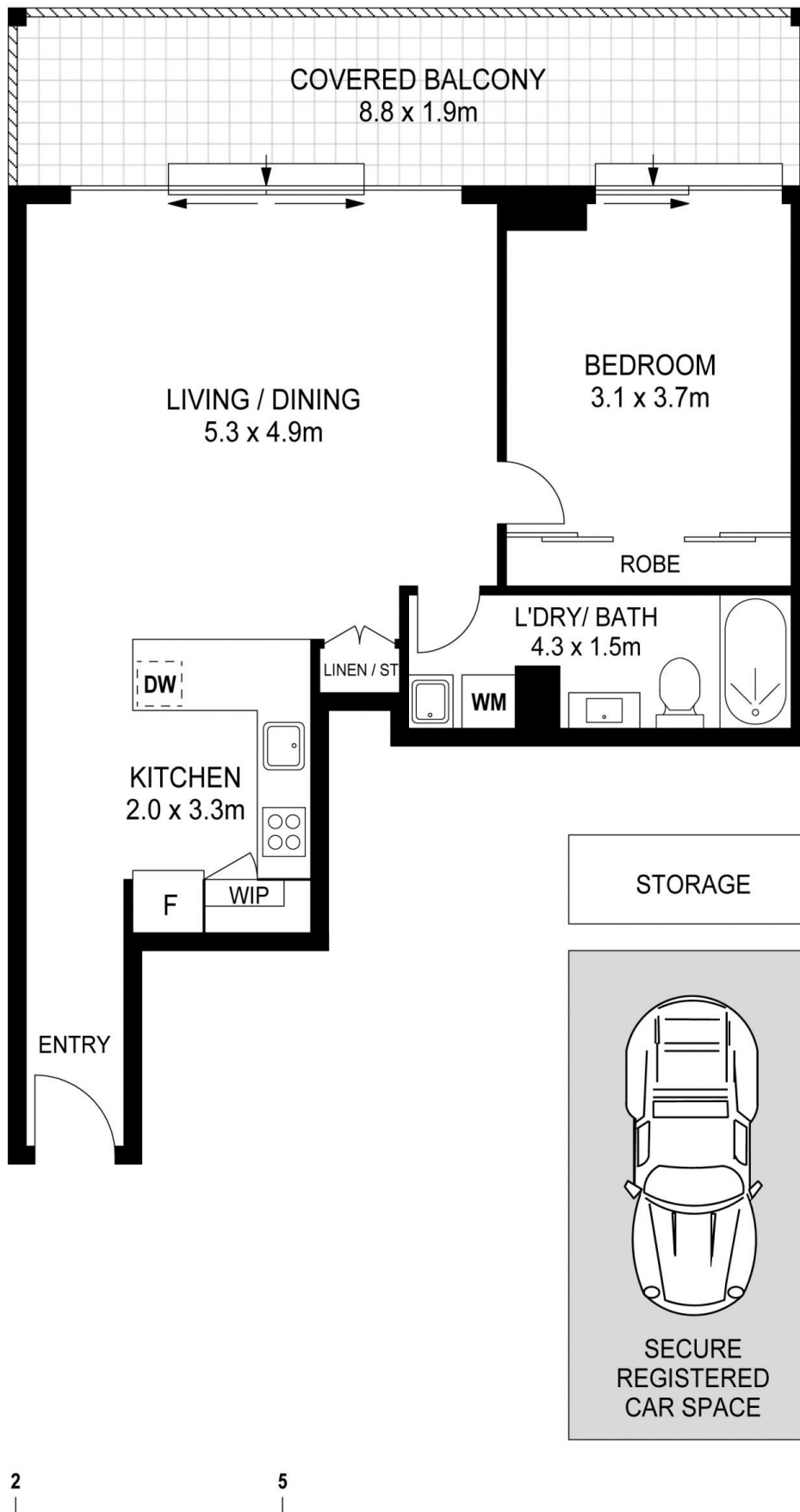
**Type** : Apartment  
**Price** : Auction  
**Building Size** : 88 sqm  
**Land Size** : 88 sqm  
**View** : <https://www.parkproperties.com.au/sale/nsw/inner-west/erskineville/residential/apartment/8274870>



**Melissah McCaffery J P**  
02 9565 5322



**Michael McCaffery**  
02 9565 5322



## 15208 / 177 - 219 Mitchell Road, Erskineville

### Disclaimer

Floor plan measurements are approximate and are for illustrative purposes only. While we cannot doubt the floor plans accuracy, we make no guarantee, warranty or representation as to the accuracy and completeness of the floor plan