



**9202/177-219 Mitchell Road Erskineville NSW**

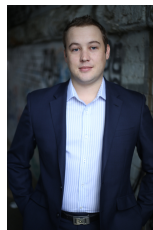
1  1  1 

Generously proportioned, this one bedroom apartment with secure parking is located in the sought after Sydney Park Village complex. Ideally positioned with a northerly aspect and private leafy outlook, this apartment offers ultimate convenience with a cosmopolitan lifestyle address.

**Type** : Apartment

**View** : <https://www.parkproperties.com.au/lease/nsw/inner-west/erskineville/residential/apartment/8262372>

Generous open plan lounge & dining area  
Gas kitchen w stainless steel appliances  
North facing balcony w private leafy outlook  
Spacious bedroom w large built-in robes  
Bathroom w tub & internal laundry w dryer  
Air conditioning & generous storage space  
Secure car space & ample visitor parking



**Beau McCaffery**  
**02 9565 5333**

Sitting on the fringe of Sydney's inner west and inner city,

[For full version visit the website](https://www.parkproperties.com.au)