



6707/177-219 Mitchell Road Erskineville NSW

2  2  1 

Positioned in a highly prized setting, this top floor 2 bedroom penthouse is split over 2 levels and has an impressive 123 sqm on title. Set in one of Erskineville most revered buildings, this 2-level, 2-bedroom residence is a home of distinction, boasting extensive views to both the North & East w/ stylish appointments throughout. A prime offering in this premier address, it commands superb vistas w/ views to the CBD skyline, Green Square, Alan Davidson Oval as well as Botany Bay. Ultra-convenient yet blissfully tucked away for peace and privacy, this home is ideally positioned for access to dining, a vibrant cafe scene & transport into the CBD. Enjoy low maintenance living coupled w/ exquisite resort style facilities in lush green surrounds.

Double brick & quality building
Spacious, light filled open plan living & dining area

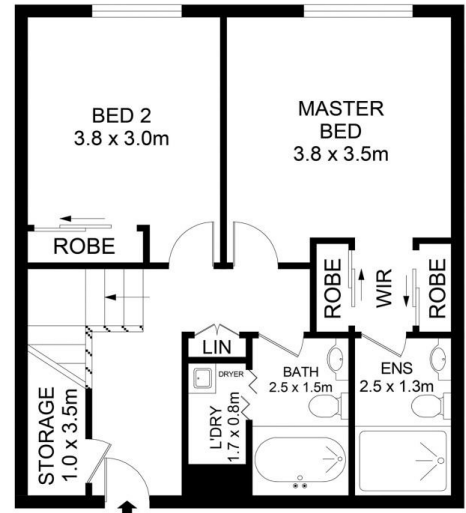
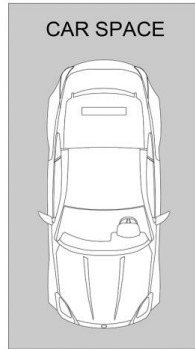
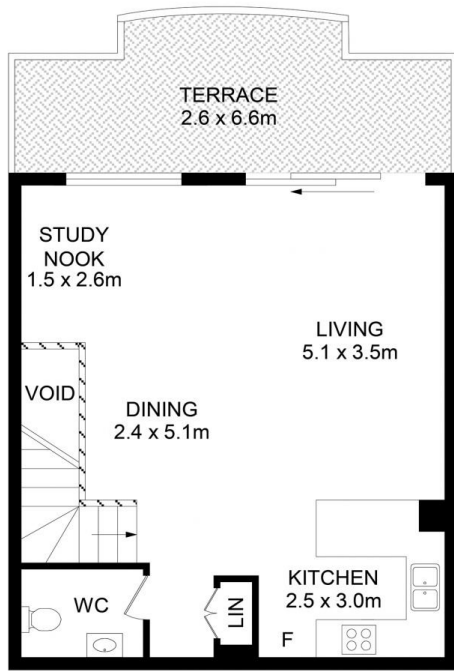
Price : \$ 1,220,000
Building Size : 123 sqm
Land Size : 123 sqm
View : <https://www.parkproperties.com.au/sale/nsw/inner-west/erskineville/residential/apartment/7927843>



Melissah McCaffery J P
02 9565 5333



Michael McCaffery
02 9565 5333



Disclaimer - Floor Plan measurements are approximate and are for illustrative purposes only. While we cannot doubt the floor plans accuracy, we make no guarantee, warranty or representation as to the accuracy and completeness of the floor plan

