



15305/177-219 Mitchell Road Erskineville NSW

2  **2**  **1** 

SOLD OFF MARKET

This original 2 bedroom apartment featuring a lucrative entertainers balcony is nestled within the acclaimed Sydney Park Village complex promises an idyllic urban lifestyle.

Generous open plan living & dining area
Original gas kitchen w/ stainless steel appliances
Master bedroom w/ walk-in robe & ensuite
Entertainers balcony w/ private leafy outlook
Second bedroom w/ built-in robes
Original bathroom w/ tub & separate laundry
Secure car space & ample visitor parking
Strata levies approx. \$2000/q

Sitting on the fringe of Sydney's inner west and inner city,

Land Size : 81 sqm

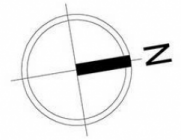
View : <https://www.parkproperties.com.au/sale/nsw/inner-west/erskineville/residential/apartmen/t/7755342>



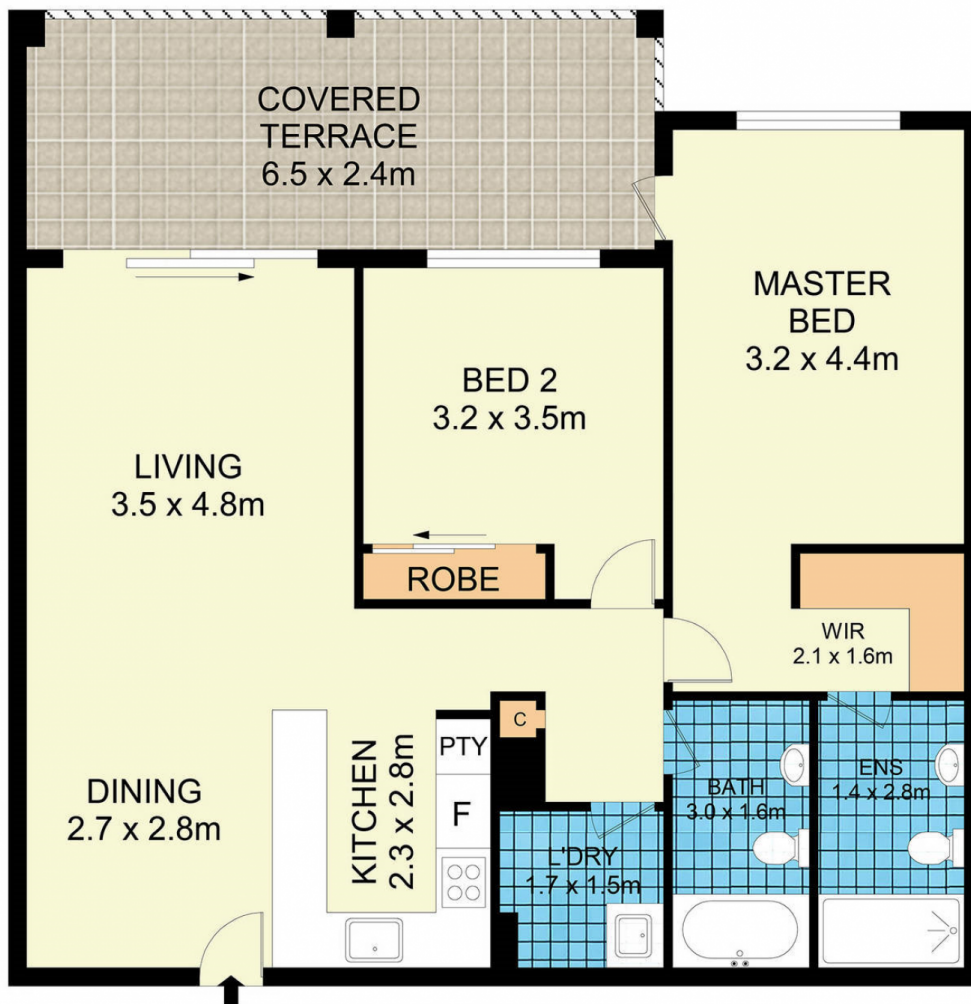
Melissah McCaffery J P
02 9565 5333



SECURE
CARSPACE



BASEMENT



COVERED
TERRACE
6.5 x 2.4m

LIVING
3.5 x 4.8m

BED 2
3.2 x 3.5m

ROBE

MASTER
BED
3.2 x 4.4m

WIR
2.1 x 1.6m

DINING
2.7 x 2.8m

KITCHEN
2.3 x 2.8m

PTY
F

L'DRY
1.7 x 1.5m

BATH
3.0 x 1.6m

ENS
1.4 x 2.8m



Disclaimer

Floor Plan measurements are approximate and are for illustrative purposes only. While we cannot doubt the floor plans accuracy , we make no guarantee , warranty or representation as to the accuracy and completeness of the floor plan