



14508/177-219 Mitchell Road Erskineville NSW

1  1  1 

Located within the newest stage of the development, this East facing apartment boasts a spacious, open plan design w/ light filled modern interiors throughout. Featuring a wide design w/ a full width balcony & private outlook w/ views overlooking the entire complex grounds, manicured gardens, tennis courts & pool - this is the perfect first start, downsize or lucrative investment.

Price : \$ 800,000
Land Size : 86 sqm
View : <https://www.parkproperties.com.au/sale/nsw/inner-west/erskineville/residential/apartmen/t/7746012>

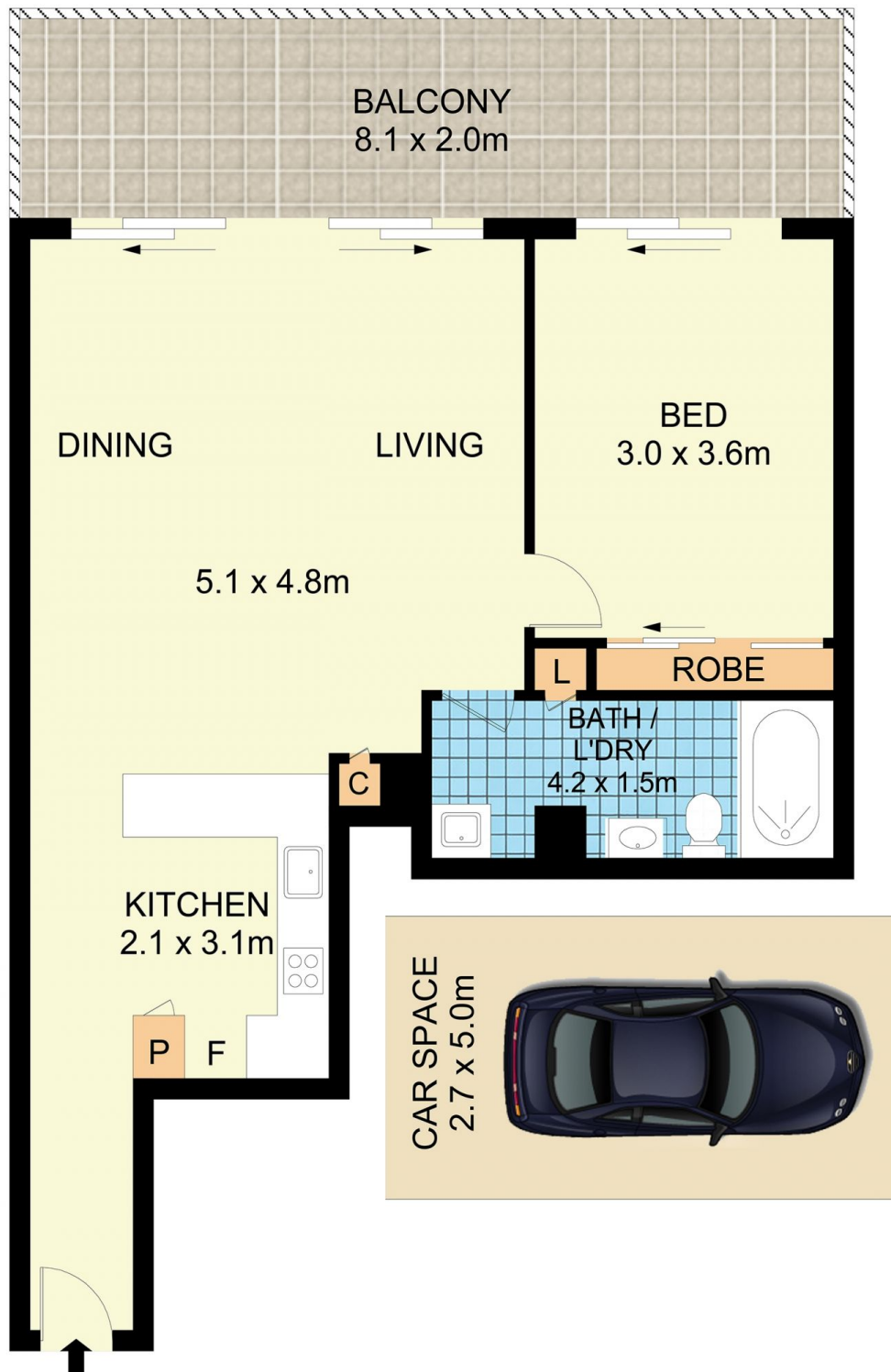
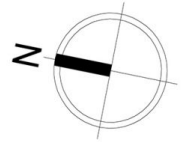
Double brick & quality building
 Spacious, open plan living & dining area w/ automatic blinds, new lighting + air con
 East facing, full-width balcony w/ impressive outlook over the complex grounds
 Renovated gas kitchen w/ s/s appliances & good storage space
 Generous bedroom w/ double built-in robe & balcony access



Melissah McCaffery J P
02 9565 5333



Michael McCaffery
02 9565 5333



14508/177-219 Mitchell Road, Erskineville

Disclaimer

Floor Plan measurements are approximate and are for illustrative purposes only. While we cannot doubt the floor plans accuracy, we make no guarantee, warranty or representation as to the accuracy and completeness of the floor plan