



501/241-245 Sydney Park Road ERSKINEVILLE NSW

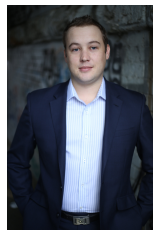
1  1  1 

Recently built, this stylish parkside apartment with secure parking is located in the boutique Ara building. Featuring a generous open floor plan, the fluid interiors welcome in the sunlight, views & air for seamless indoor-outdoor entertaining.

Price : \$ 620

View : <https://www.parkproperties.com.au/lease/nsw/inner-west/erskineville/residential/apartment/7018570>

- Large open plan lounge & dining area
- Designer gas kitchen w European appliances
- Well-appointed bedroom w built-in robes
- Entertainers balcony w sprawling park views
- Stylish bathroom & separate laundry
- Air conditioning & ample storage space
- Undercover secure car space & visitor parking



Beau McCaffery
02 9565 5333

Located in a sought-after city fringe address, Close to all amenities including Erskineville Village, King Streets restaurants and only moments away from the ever so