



**9/20-28 Baldwin Street Erskineville NSW**

2  1  1 

Positioned on the top floor in a boutique block of only 12, this revamped North facing apartment has desirable district & city views, features new hardwood flooring, fresh paint + new lighting throughout. Situated in a quiet setting close to Green Ban Park, community gardens w/ tranquil greenery surrounds - this urban oasis is footsteps to King street + less than 500m to Erskineville & Newtown station. One owner since 1983.

Top floor, no common walls, red brick walk up  
North facing living/dining area & outdoor entertaining space w/ city & district views and great cross ventilation  
Updated kitchen w/ stainless steel appliances  
2 bedrooms, both w/ built ins  
Bathroom w/ tub & internal laundry  
New hardwood flooring, freshly painted, Led downlights  
Spacious undercover parking space, pet friendly complex

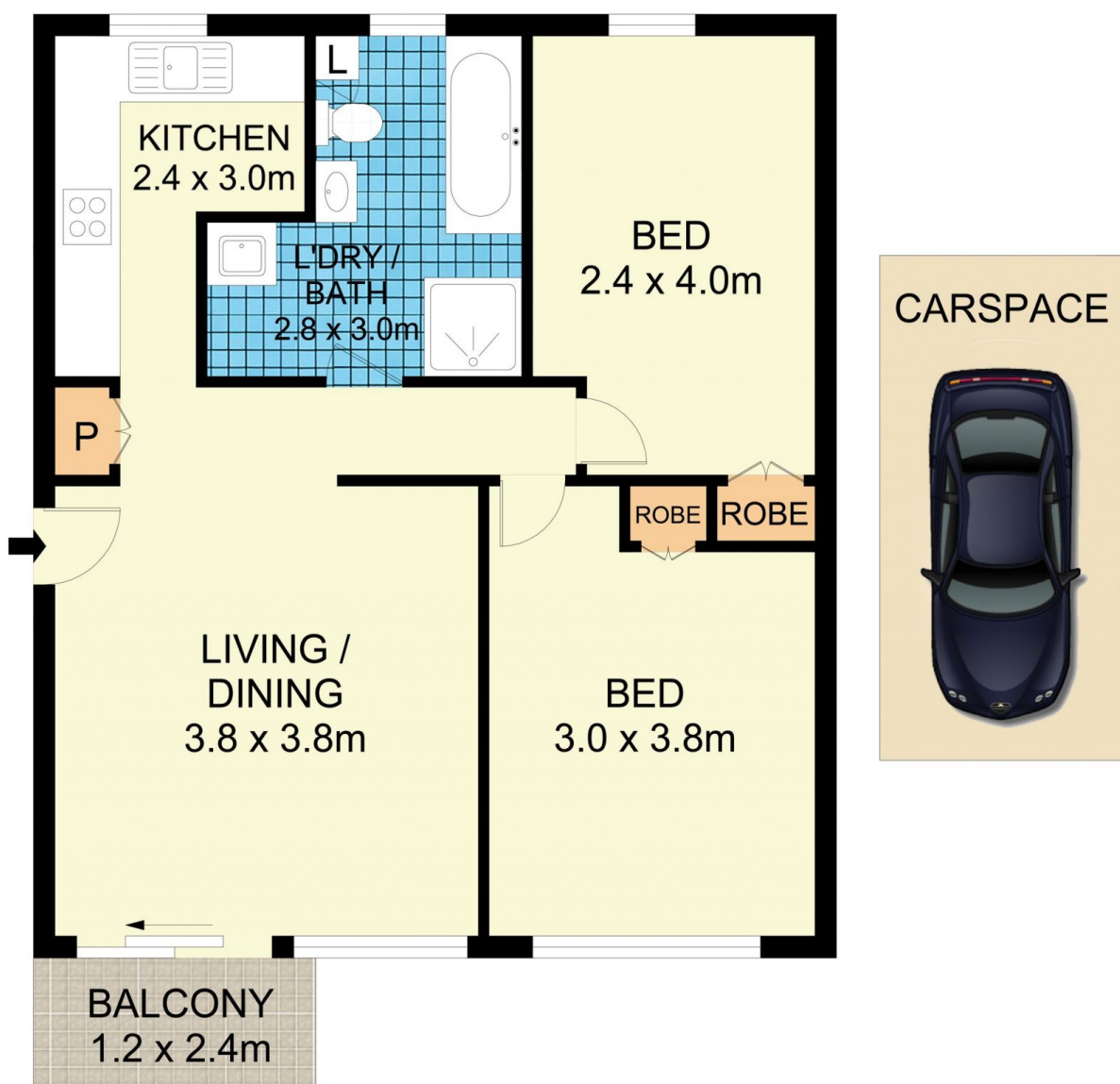
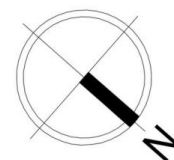
**Price** : \$ 925,000  
**Land Size** : 74 sqm  
**View** : <https://www.parkproperties.com.au/sale/nsw/inner-west/erskineville/residential/apartmen>  
t/6940706



**Melissah McCaffery J P**  
02 9565 5333



**Rebecca Voncina**  
02 9565 5333



9/20 Baldwin Street, Erskineville



**Disclaimer**

Floor Plan measurements are approximate and are for illustrative purposes only. While we cannot doubt the floor plans accuracy, we make no guarantee, warranty or representation as to the accuracy and completeness of the floor plan