



**1409/177-219 Mitchell Road Erskineville NSW**

1  1  1 

This tastefully renovated apartment is positioned on the fourth floor & situated in the impressive resort style complex Sydney Park Village. Taking advantage of the West facing aspect to the manicured gardens and grounds, this quiet & peaceful home is move-in ready to either occupy or rent. Surrounded by cafes, pocket parks & nightlife - enjoy the community lifestyle & walk everywhere convenience.

**Price** : \$ 650,000

**View** : <https://www.parkproperties.com.au/sale/nsw/inne-r-west/erskineville/residential/apartment/6880183>

Open plan living & dining w/ air con & custom in built storage

New gas kitchen w/ new stainless steel appliances, new stone benchtop & plenty of storage

Covered West facing balcony overlooking the manicured gardens

Master bedroom w/ mirrored BIR

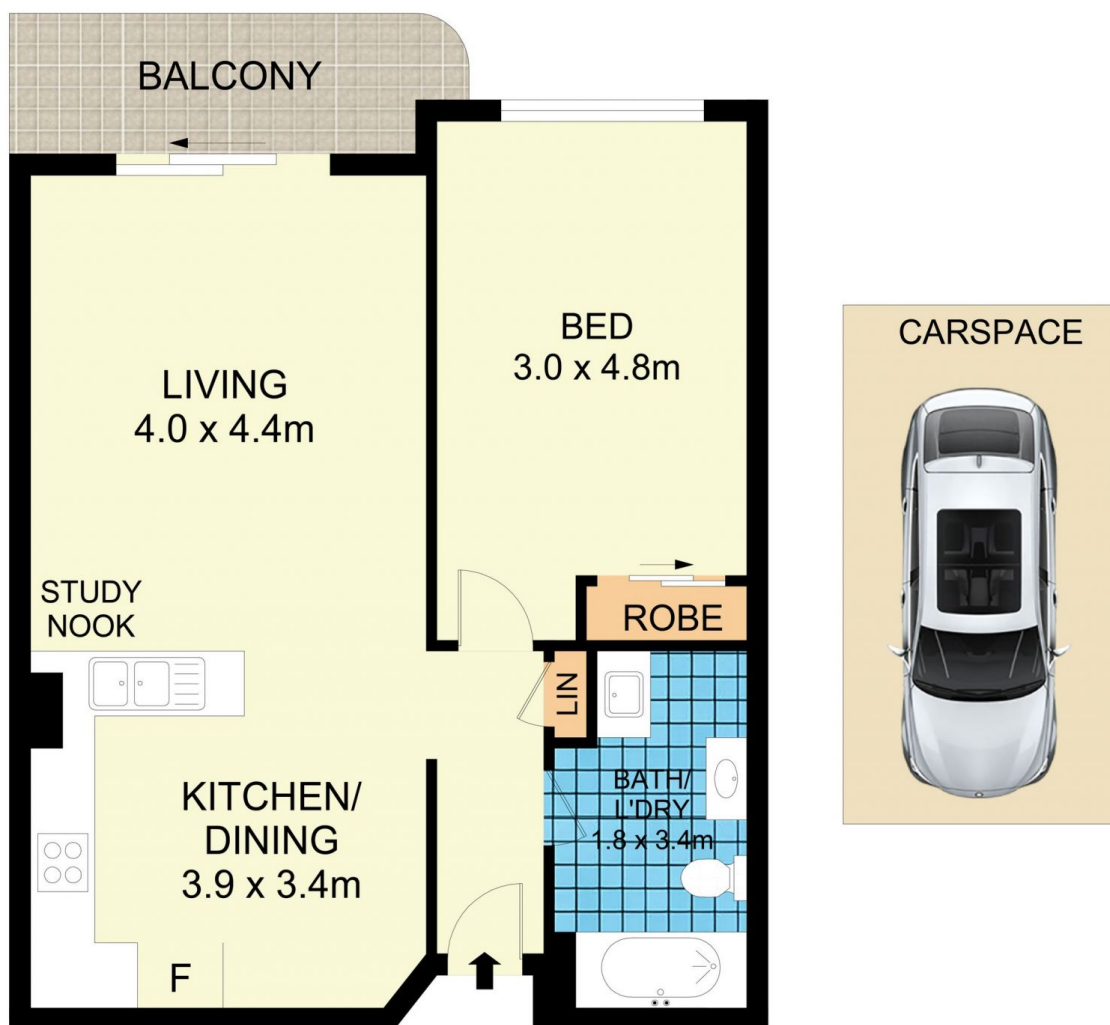
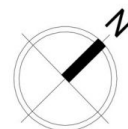
Main bathroom w/ tub & laundry facilities



**Melissah McCaffery J P**  
02 9565 5333



**Rebecca Voncina**  
02 9565 5333



1409/177-219 Mitchell Road, Erskineville

Disclaimer

Floor Plan measurements are approximate and are for illustrative purposes only. While we cannot doubt the floor plans accuracy, we make no guarantee, warranty or representation as to the accuracy and completeness of the floor plan