

9208/177-219 Mitchell Road Erskineville NSW

1  1 

Positioned on the second floor & situated in the impressive resort style complex Sydney Park Village, this West facing apartment overlooks the gardens & grounds whilst being surrounded by cafes, pocket parks & nightlife - enjoy the community lifestyle & walk everywhere convenience.

Building Size : 67 sqm
Land Size : 67 sqm
View : <https://www.parkproperties.com.au/sale/nsw/inner-west/erskineville/residential/apartment/6842932>

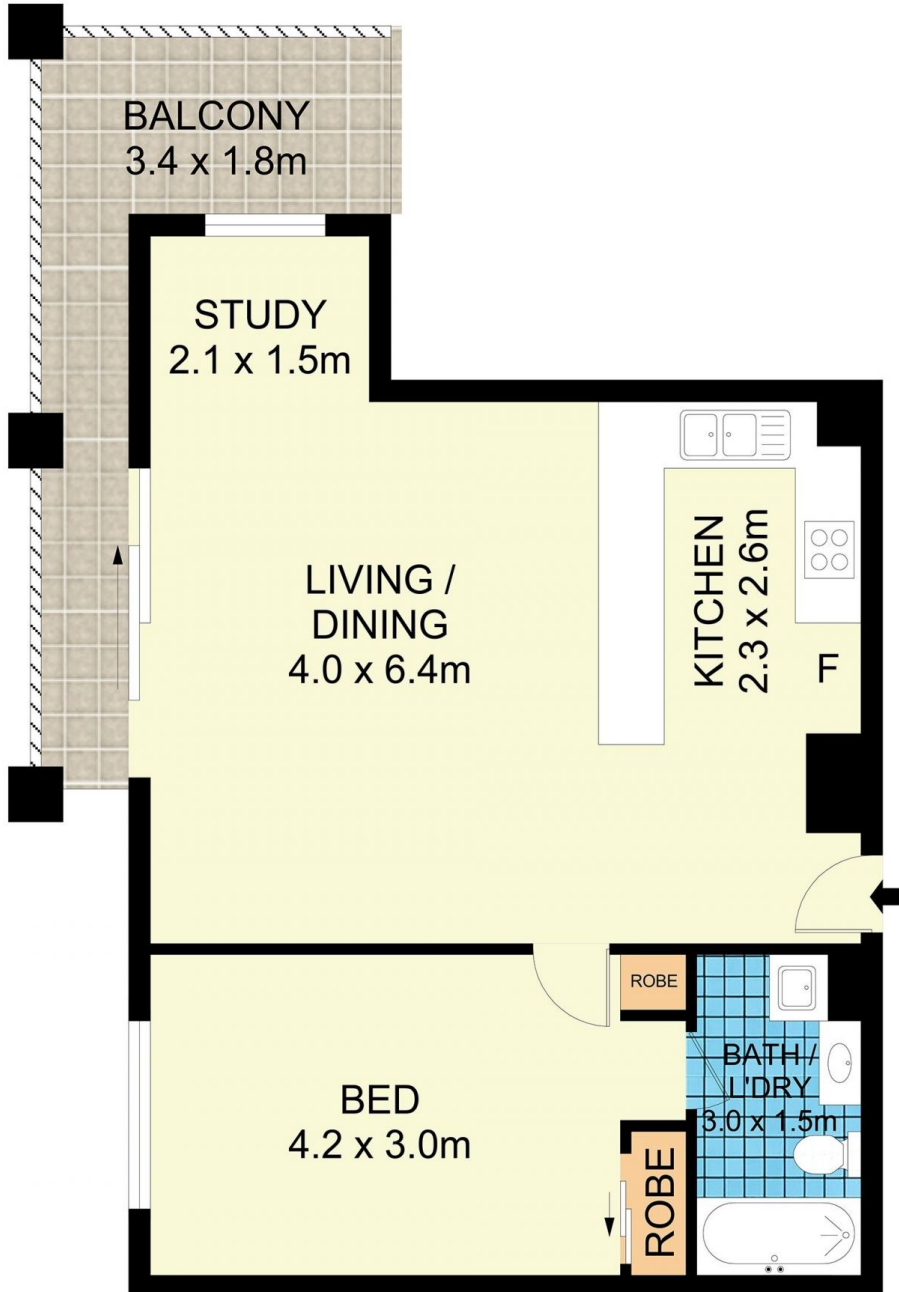
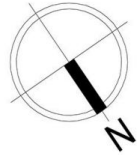
Open plan living & dining w/ air con & study nook
Gas kitchen w/ plenty of storage
Covered East facing balcony overlooking the manicured gardens
Master bedroom w/ mirrored BIR
Bathroom w/ tub & laundry facilities
Updated paint & carpet
Intercom access, lift access, 24 hour on-site security, pet friendly complex
Leased until 28/9/22 at \$480/week



Melissah McCaffery J P
02 9565 5333



Rebecca Voncina
02 9565 5333



9208/177-219 Mitchell Road, Erskineville

Disclaimer

Floor Plan measurements are approximate and are for illustrative purposes only. While we cannot doubt the floor plans accuracy , we make no guarantee , warranty or representation as to the accuracy and completeness of the floor plan