



9311/177-219 Mitchell Road Erskineville NSW

1  1  1 

Nestled amid the oasis-like gardens + resort style enclave of Sydney Park Village, this luxe apartment captures the essence of inner-city living. Featuring an open plan layout w/ updated + light filled interiors that emphasise space & inspires an effortless lifestyle in a serene resort-style sanctuary. Indulge in the array of onsite facilities and explore the eclectic dining and nightlife hubs of Erskineville, Alexandria and Newtown right on your doorstep - the perfect inner west home or savvy investment opportunity.

Open plan living w/ air con leads to the internal facing entertainer's balcony overlooking the manicured gardens
Master bedroom w/ mirrored BIR
Well-appointed gas kitchen w/ s/s appliances & plenty of storage
Main bathroom w/ tub & laundry facilities
Secure parking & ample visitor parking

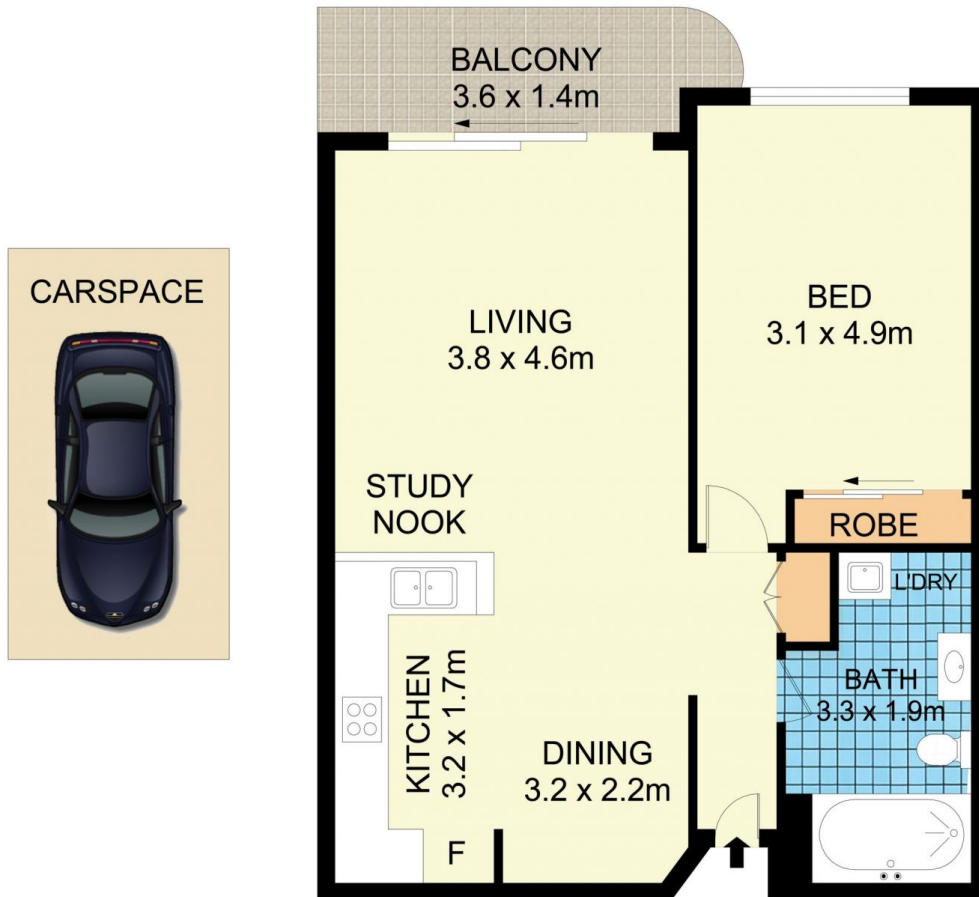
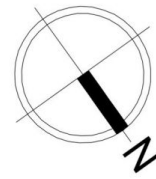
Price : \$ 640,000
Building Size : 75 sqm
Land Size : 75 sqm
View : <https://www.parkproperties.com.au/sale/nsw/inner-west/erskineville/residential/apartment/6809237>



Melissah McCaffery J P
02 9565 5333



Rebecca Voncina
02 9565 5333



9311/177-219 Mitchell Road, Erskineville



Disclaimer

Floor Plan measurements are approximate and are for illustrative purposes only. While we cannot doubt the floor plans accuracy, we make no guarantee, warranty or representation as to the accuracy and completeness of the floor plan