



9508/177-219 Mitchell Road Erskineville NSW

1  1  1 

Peacefully situated on the East corner of the complex, this tastefully renovated apartment features a corner position with only one common wall, large wrap-around balcony & private views from every room. Situated in the impressive resort style complex Sydney Park Village, take advantage to either occupy or invest in this lucrative entry level opportunity.

Price : \$ 700,000
Building Size : 80 sqm
Land Size : 80 sqm
View : <https://www.parkproperties.com.au/sale/nsw/inner-west/erskineville/residential/apartment/6747473>

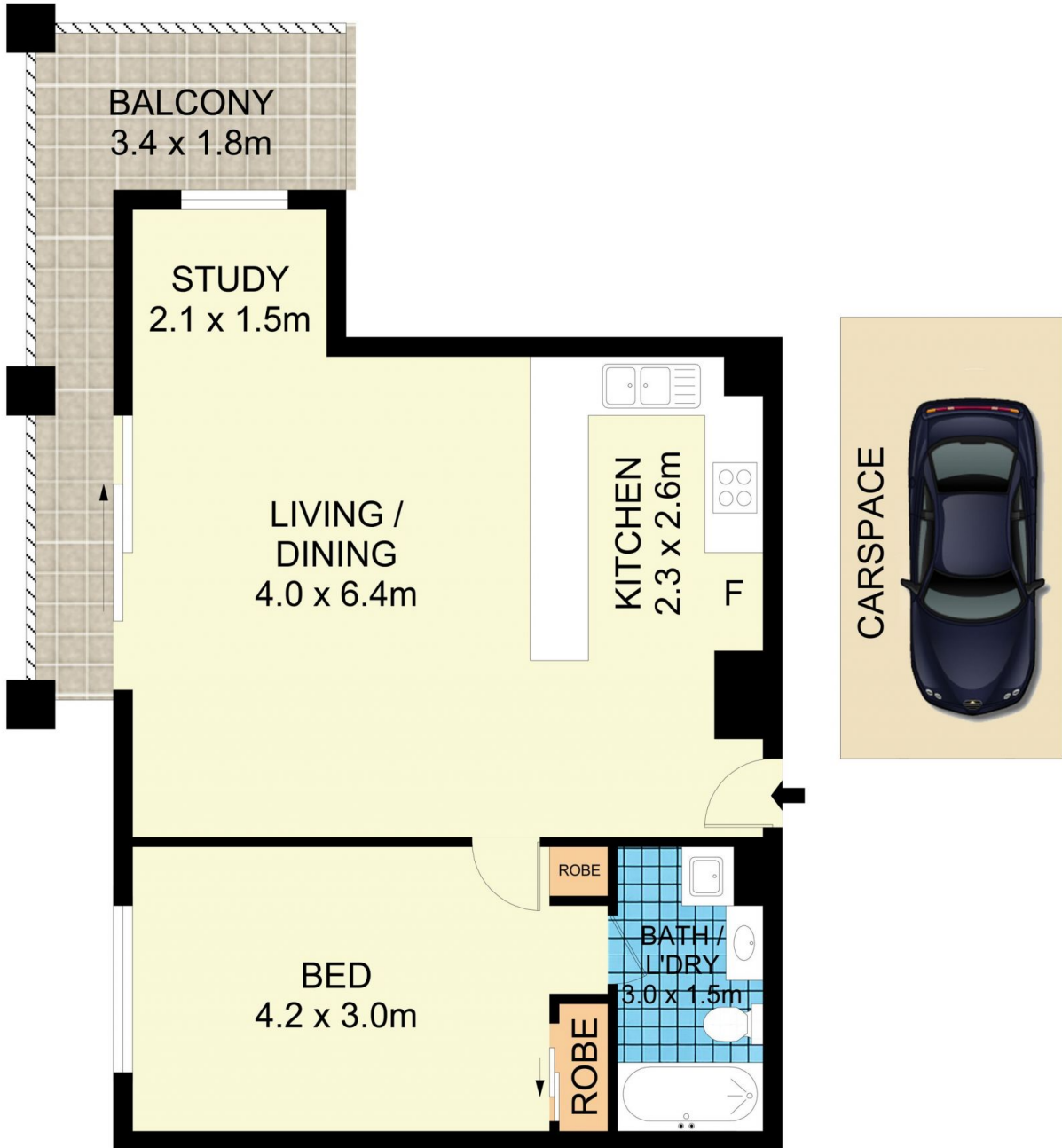
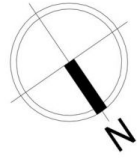
Open plan living/dining area w/ study nook & air con
 Large wrap around balcony w/ district & city views
 Updated gas kitchen w/ quality appliances (no separate gas bill in this strata plan)
 Generous master bedroom w/ BIR
 Renovated bathroom w/ tub & laundry facilities
 New paint, new flooring, new lighting
 Secure undercover parking & ample visitor parking
 Intercom, lift access, 24/7 on-site security & pet friendly



Melissah McCaffery J P
02 9565 5333



Rebecca Voncina
02 9565 5333



9508/177-219 Mitchell Road, Erskineville

Disclaimer

Floor Plan measurements are approximate and are for illustrative purposes only. While we cannot doubt the floor plans accuracy, we make no guarantee, warranty or representation as to the accuracy and completeness of the floor plan