

**16311/177-219 Mitchell Road Erskineville NSW**

1  1  1 

This impressive renovated apartment is located in the popular stand alone "Clifton Green" building and has a total of 92 sqm on title. Featuring a versatile floor plan w/ desirable internal views of the tennis courts, renovated interiors and generous outdoor space. Enjoy resort style living, a variety of dining options/cafes to choose from and the convenience of Sydney Park right across the road.

**Price** : \$ 820,000  
**Land Size** : 92 sqm  
**View** : <https://www.parkproperties.com.au/sale/nsw/inner-west/erskineville/residential/apartmen/t/6686099>

Generous open plan living & dining area w/ air-conditioning

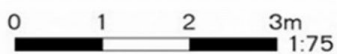
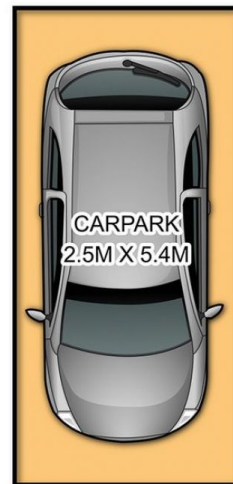
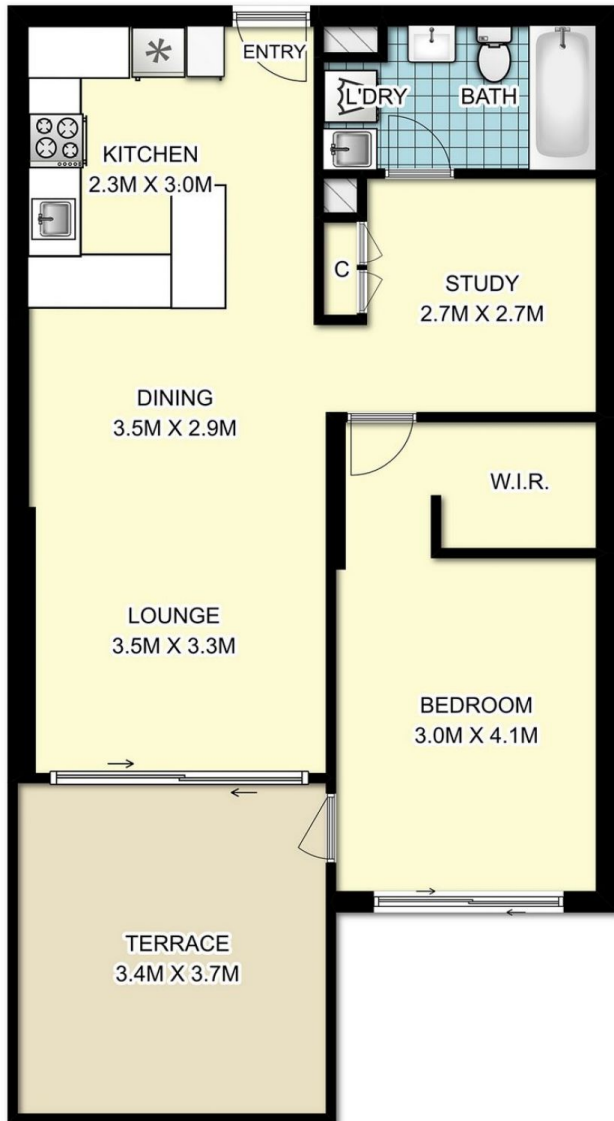
Entertainers balcony w/ desirable internal views  
 Spacious master bedroom w/ WIR & balcony access  
 Renovated gas kitchen w/ s/s appliances & plenty of storage  
 Renovated bathroom w/ tub & laundry facilities  
 Separate study, perfect for second bedroom, home office or nursery



**Michael McCaffery**  
 02 9565 5333



**Rebecca Voncina**  
 02 9565 5333



## 16311 / 177-219 Mitchell Road, Erskineville

**DISCLAIMER:** SYDRealEstatePhoto accepts no liability for the accuracy of details contained within our floor plans. The plan scale in meters. Indicative only. Dimensions are approximate. All information contained here in is gathered from sources we believe to be reliable. However we cannot guarantee its accuracy and interested persons should rely on their own enquiries.