



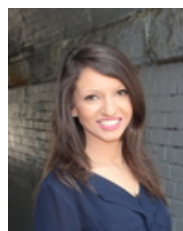
**11501/177-219 Mitchell Road Erskineville NSW**

2  2  1 

This North facing two bedroom apartment features a generous floor plan, entertainers balcony w/ desirable internal views of the tennis courts + lush green surrounds of Sydney Park Village.

- Open plan living and dining area
- North facing balcony w/ internal complex views
- Master bedroom w/ walk in robe & ensuite
- Second bedroom w/ built in robe & balcony access
- Well-appointed gas kitchen w/ s/s appliances
- Stylish bathrooms, main w/ tub
- Separate internal laundry
- Secure car space & plenty of storage
- Intercom, lift access & 24/7 on-site security
- Pet friendly complex
- Strata levies approx. \$2,305/q

**Price** : \$ 1,007,000  
**Building Size** : 117 sqm  
**Land Size** : 117 sqm  
**View** : <https://www.parkproperties.com.au/sale/nsw/inner-west/erskineville/residential/apartment/6648650>



**Rebecca Voncina**  
02 9565 5333



**Michael McCaffery**  
02 9565 5333