



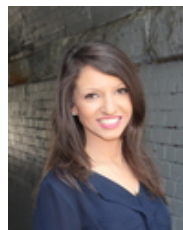
10505/177-219 Mitchell Road Erskineville NSW

1  1  1 

A desirable inner west address, this one bedroom apartment + study + parking ticks all the boxes. Enjoy low maintenance living coupled w/ resort facilities + lush green surrounds of Sydney Park.

View : <https://www.parkproperties.com.au/sale/nsw/inner-west/erskineville/residential/apartment/6641291>

Open plan living & dining area
Balcony w/ private outlook
Well-appointed gas kitchen w/ s/s appliances
Light filled master bedroom w/ BIR
Separate study area, perfect home office or nursery
Bathroom w/ laundry facilities
Secure undercover parking & ample visitor parking
Intercom, lift access & 24/7 on-site security
Pet friendly complex
Strata levies approx. \$1,830/q

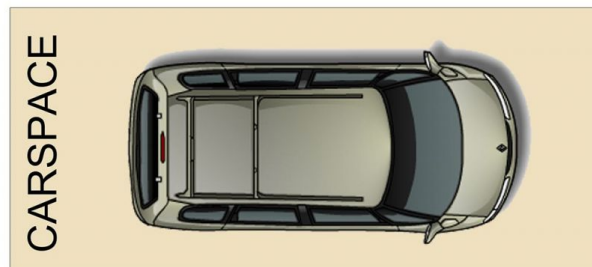
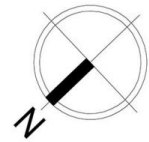


Rebecca Voncina
02 9565 5333



Melissah McCaffery J P
02 9565 5333

Sitting on the fringe of Sydney's inner west and inner city,



10505/177-219 Mitchell Road, Erskineville

Disclaimer

Floor Plan measurements are approximate and are for illustrative purposes only. While we cannot doubt the floor plans accuracy, we make no guarantee, warranty or representation as to the accuracy and completeness of the floor plan