



14105/177-219 Mitchell Road ERSKINEVILLE NSW

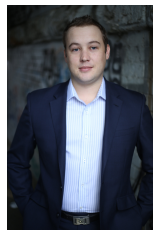
1  1  1 

Situated on the ground floor featuring generous interiors and a great entertainer's layout, this one bedroom plus study garden apartment with secure parking is located in the highly sought after lifestyle complex that is Sydney Park Village.

Price : \$ 550

View : <https://www.parkproperties.com.au/lease/nsw/inner-west/erskineville/residential/apartment/6487476>

- Generous open plan lounge & dining area
- Modern gas kitchen w stainless steel appliances
- Light filled courtyard perfect for entertaining
- Spacious bedroom w built-in robes & courtyard access
- Bathroom w tub & internal laundry w clothes dryer
- Separate study area perfect for home office
- Air conditioning & ceiling fans
- Secure car space & ample visitor parking



Beau McCaffery
02 9565 5333

Sitting on the fringe of Sydney's inner west and inner city, its popular location is 5km from the CBD, 5-minute walk to