



11405/177-219 Mitchell Road ERSKINEVILLE NSW

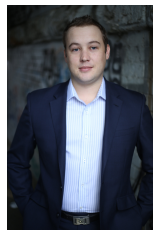
1  1  1 

Located in the acclaimed Sydney Park Village development, this park view apartment is set moments from the Inner West's most coveted conveniences. Boasting generous open plan living, it also features a separate study area and views over Sydney Park.

Price : \$ 450

View : <https://www.parkproperties.com.au/lease/nsw/inner-west/erskineville/residential/apartment/6444587>

Generous open plan lounge & dining area
 Designer gas kitchen w stainless steel appliances
 Spacious bedroom w large built-in robes
 Bathroom w tub & internal laundry w dryer
 Balcony with views over Sydney Park
 Separate study area perfect for home office
 Secure car space & ample visitor parking



Beau McCaffery
02 9565 5333

Sitting on the fringe of Sydney's inner west and inner city, its popular location is 5km from the CBD, 5-minute walk to St Peters station or 10-minute walk to Erskineville station