

1006/18-20 Pelican Street Surry Hills NSW

1  1  1 

Set high within the acclaimed 'Monument' building, this sophisticated apartment is located on the 10th floor & features impressive city views. With floor-to-ceiling windows & a well-configured floorplan, it holds impressive appeal as an ideal home or investment opportunity.

Land Size : 83 sqm

View : <https://www.parkproperties.com.au/sale/nsw/eastern-suburbs/surry-hills/residential/apartment/6422006>

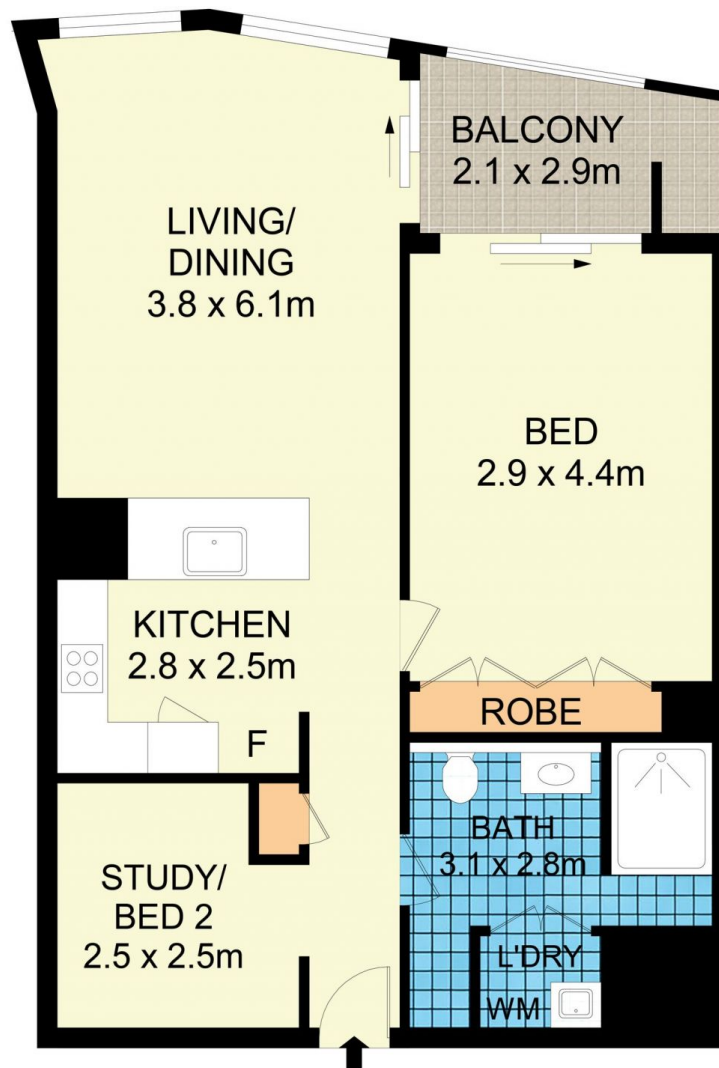
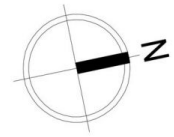
Open plan living & dining area w/ a/c & city views
Designer quality kitchen w/ Caesarstone benchtops & s/s appliances
Covered alfresco balcony that offers optimum privacy
Oversized master bedroom w/ BIR & balcony access
Multipurpose/2nd bedroom, study or nursery
Resort-style facilities including heated outdoor pool, gym, manicured gardens & concierge
Pet friendly, security intercom access, lift access & undercover carspace
Strata levies approx. \$1134/q



Melissah McCaffery J P
02 9565 5333



Rebecca Voncina
02 9565 5333



1006/20 Pelican Street, Surry Hills



Disclaimer

Floor Plan measurements are approximate and are for illustrative purposes only. While we cannot doubt the floor plans accuracy, we make no guarantee, warranty or representation as to the accuracy and completeness of the floor plan