



**13501/177-219 Mitchell Road ERSKINEVILLE NSW**

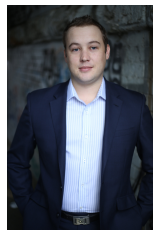
1  1  1 

This one bedroom apartment with study and secure parking is located in the highly desirable Sydney Park Village. Naturally bright with modern features and an ideal northerly aspect, this property showcases open plan living and a private outlook with complex views.

**Price** : \$ 560

**View** : <https://www.parkproperties.com.au/lease/nsw/inner-west/erskineville/residential/apartment/6356813>

Generous open plan lounge & dining area  
Designer gas kitchen w stainless steel appliances  
Light filled entertainers balcony w complex views  
Spacious bedroom w walk-in robe & balcony access  
Stylish bathroom w tub & separate laundry w dryer  
Separate study area perfect for home office  
Air conditioning & ample storage space  
Secure car space w storage box



**Beau McCaffery**  
**02 9565 5333**

Sitting on the fringe of Sydney's inner west and inner city, its popular location is 5km from the CBD, 5-minute walk to