



17606/177-219 Mitchell Road ERSKINEVILLE NSW

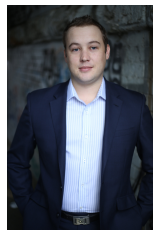
1  1  1 

Offering sophistication & tranquillity amid Erskineville's vibrant lifestyle precinct, this contemporary haven is nestled within the acclaimed Sydney Park Village complex promises an idyllic urban lifestyle.

Price : \$ 550

View : <https://www.parkproperties.com.au/lease/nsw/inner-west/erskineville/residential/apartment/6331289>

Generous open plan lounge & dining area
Gas kitchen w stainless steel appliances
Spacious bedroom w built-in robes
Entertainers balcony w city skyline views
Bathroom w tub & internal laundry w dryer
Separate study area perfect for home office
Air conditioning & generous storage space
Secure car space & ample visitor parking



Beau McCaffery
02 9565 5333

Sitting on the fringe of Sydney's inner west and inner city, its popular location is 5km from the CBD, 5 minute walk to St Peters station or 10 minute walk to Erskineville station