



**3306/177-219 Mitchell Road Erskineville NSW**

1  1  1 

Surrounded w/ a lush green outlook, this apartment delivers an impressive sense of privacy in a city-fringe position. With an impressively large lounge/dining & oversized bedroom - the ideal purchase for first home buyers or savvy investors.

**Price** : \$ 610,000  
**Land Size** : 74 sqm  
**View** : <https://www.parkproperties.com.au/sale/nsw/inner-west/erskineville/residential/apartmen/t/6195794>

Light filled open plan living & dining area  
 Air conditioning approved for installation  
 Covered balcony w/ park views  
 Well-appointed gas kitchen w/ s/s appliances & plenty of storage  
 Spacious light filled master bedroom w/ BIR  
 Stylish bathroom w/ tub & laundry facilities  
 Security intercom, direct access to secure basement parking via lift & 24/7 onsite security

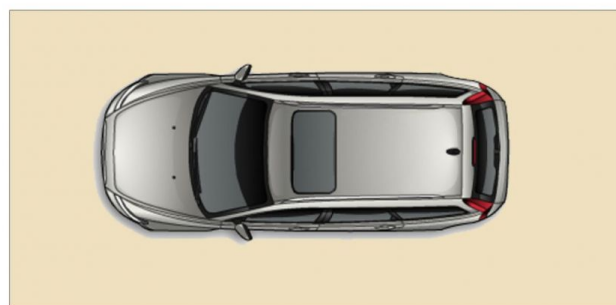
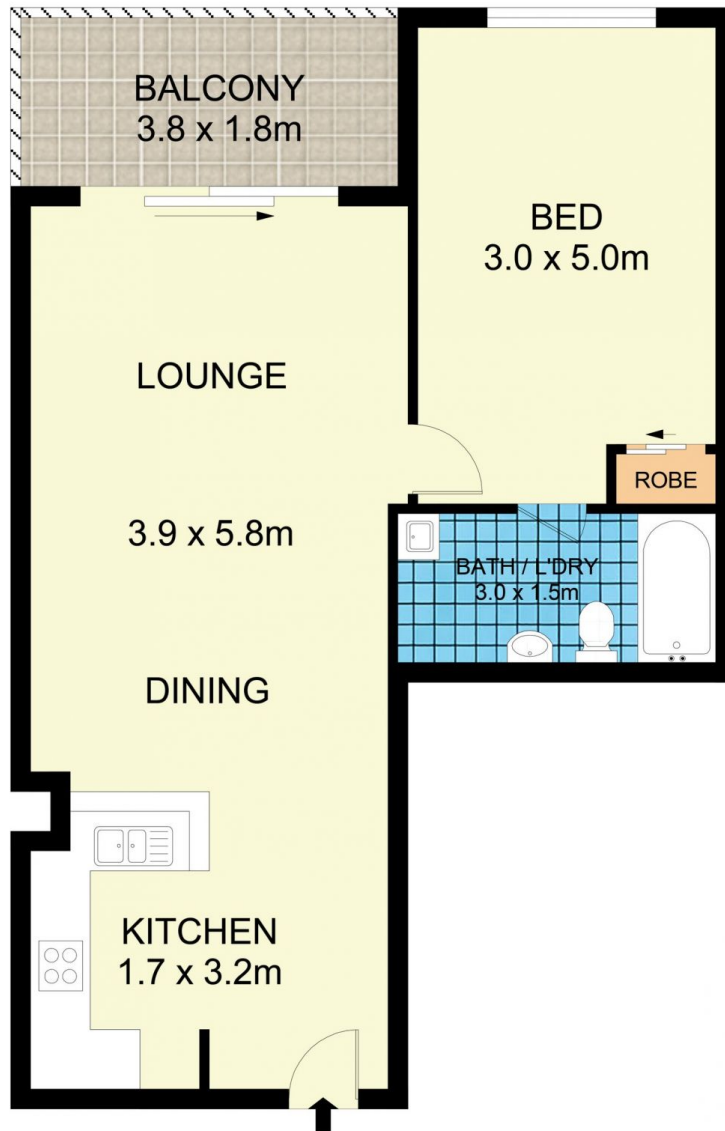
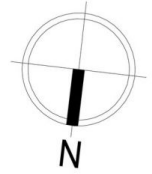
Sitting on the fringe of Sydney's inner west and inner city,



**Melissah McCaffery J P**  
02 9565 5333



**Rebecca Voncina**  
02 9565 5333



SECURE CARSPACE



3306/177-219 Mitchell Road, Erskineville

Disclaimer

Floor Plan measurements are approximate and are for illustrative purposes only. While we cannot doubt the floor plans accuracy, we make no guarantee, warranty or representation as to the accuracy and completeness of the floor plan