



8601/177-219 Mitchell Road ERSKINEVILLE NSW

1  1  1 

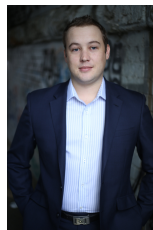
Located on the top floor with a light filled northerly aspect and city skyline views, this apartment offers ultimate convenience with a cosmopolitan lifestyle address.

Light filled open plan lounge & dining area
Gas kitchen w stainless steel appliances
Bedroom w built-in robes & balcony access
Modern bathroom & separate laundry w dryer
Entertainers balcony w city skyline views
Secure car space & ample visitor parking

Sitting on the fringe of Sydney's inner west and inner city, its popular location is 5km from the CBD, 5 minute walk to St Peters station or 10 minute walk to Erskineville station and located directly across from the 2020 Architizer A+ Awards most extensive architecture awards program winner Sydney Park. Highly prized for its relaxed yet

Price : \$ 400

View : <https://www.parkproperties.com.au/lease/nsw/inner-west/erskineville/residential/apartment/6033292>



Beau McCaffery
02 9565 5333