



18404/177-219 Mitchell Road Erskineville NSW

1  1  1 

Nestled within the lush-green surrounds of Sydney Park Village, this one bedroom apartment with study and parking has an impressive 84 sqm on title. Featuring an open plan layout and attractive North facing aspect inspires a promising yet effortless inner city lifestyle.

Land Size : 84 sqm
View : <https://www.parkproperties.com.au/sale/nsw/inner-west/erskineville/residential/apartmen>
t/5987576

Spacious open plan living & dining area
Generous entertainer's balcony w/ leafy outlook
Modern gas kitchen w/ s/s appliances & plenty of storage
Master bedroom w/ air con, BIR & balcony access
Separate study, perfect for home office or nursery
Stylish bathroom w/ tub & laundry facilities
Security intercom, direct access to secure basement parking via lift & 24/7 onsite security

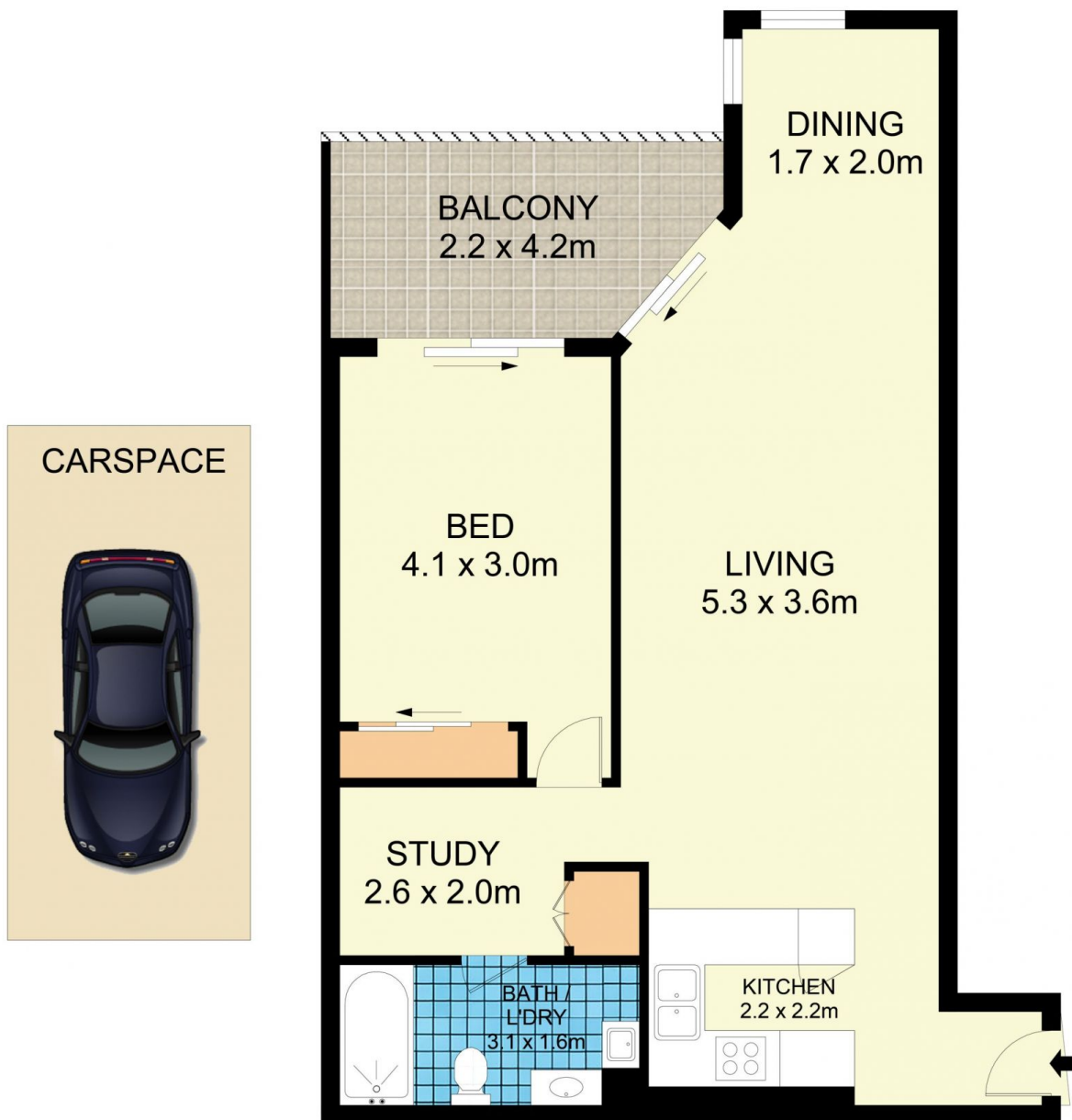
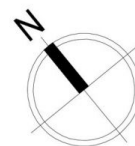
Sitting on the fringe of Sydney's inner west and inner city, its popular location is 5km from the CBD, 5 minute walk to



Rebecca Voncina
02 9565 5333



Melissah McCaffery J P
02 9565 5333



18404/177-219 Mitchell Road, Erskineville

Disclaimer

Floor Plan measurements are approximate and are for illustrative purposes only. While we cannot doubt the floor plans accuracy, we make no guarantee, warranty or representation as to the accuracy and completeness of the floor plan