

**15503/177-219 Mitchell Road Erskineville NSW**

1  1  1 

Set in the exclusive Sydney Park Village resort style complex, this sun drenched one bedroom apartment offers immense privacy while capturing the essence of urban city living. With an attractive west facing aspect and over-sized entertainer's balcony, this apartment offers the perfect inner city home or investment opportunity.

**Land Size** : 89 sqm  
**View** : <https://www.parkproperties.com.au/sale/nsw/inner-west/erskineville/residential/apartmen/5987082>

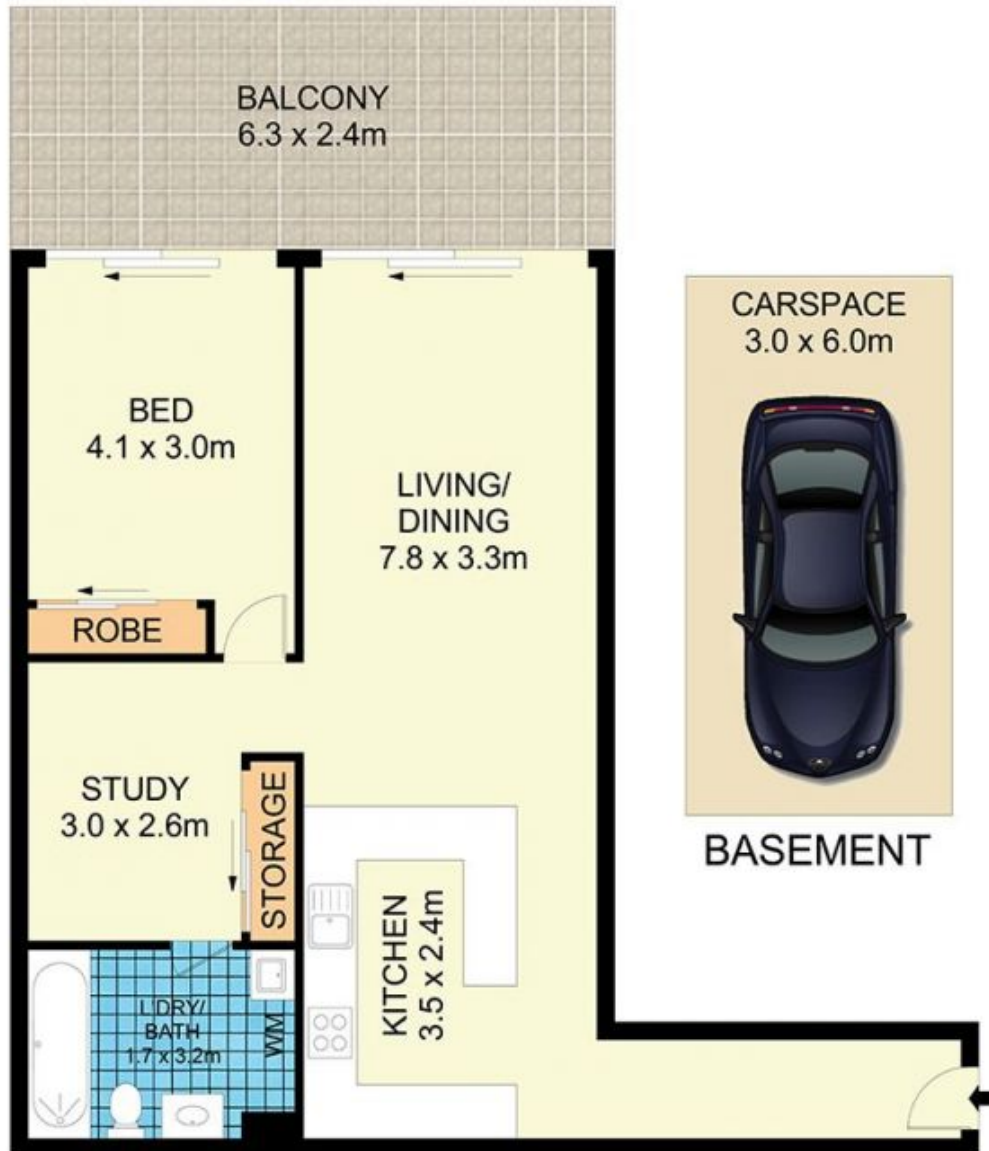
Spacious open plan lounge & dining w/ air-conditioning  
Generous covered entertainers' terrace  
Modern gas kitchen w/ new s/s appliances  
Master bedroom w/ BIR & balcony access  
Separate study, perfect for home office or nursery  
Stylish bathroom w/ tub & laundry facilities  
Security intercom, direct access to secure basement parking via lift & 24/7 onsite security  
Currently rented @ \$590 pw  
Strata levies \$1,561 pq



**Melissah McCaffery J P**  
02 9565 5333



**Rebecca Voncina**  
02 9565 5333



15503/177219 Mitchell Road, Erskineville

**Disclaimer**

Floor Plan measurements are approximate and are for illustrative purposes only. While we cannot doubt the floor plans accuracy, we make no guarantee, warranty or representation as to the accuracy and completeness of the floor plan.