






**17203/177-219 Mitchell Road Erskineville NSW**

2  2  1 

Set within the lush-green surrounds of Sydney Park village, this immaculate two bedroom apartment + study with secure basement parking has a generous 123 sqm on title. Featuring an open plan layout with light filled & updated interiors throughout inspires a promising yet effortless inner city lifestyle.

Open plan living & dining w/ air con & outdoor area w/ leafy outlook  
Well-appointed gas kitchen w/ complex views  
Master bedroom w/ WIR, updated en-suite, air con & balcony access  
Generous second bedroom w/ BIR & complex views  
Two bathrooms, main w/ tub & separate laundry  
Study area/sitting room perfect for home office or second lounge room  
Security intercom, direct access to secure basement

**Land Size** : 123 sqm  
**View** : <https://www.parkproperties.com.au/sale/nsw/inner-west/erskineville/residential/apartmen>  
t/5857839



**Melissah McCaffery J P**  
02 9565 5333

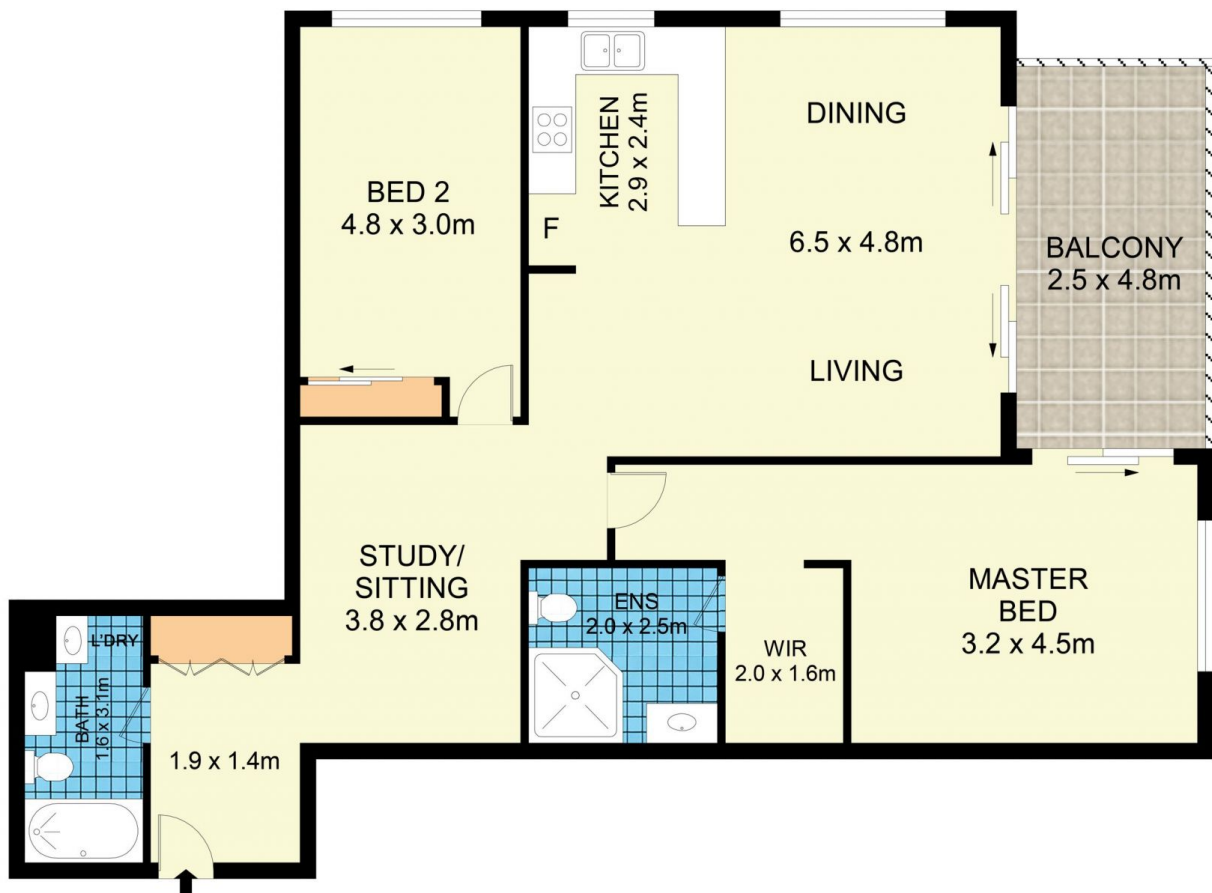


**Rebecca Voncina**  
02 9565 5333





CARSPACE



17203/177-219 Mitchell Road, Erskineville 0 1 2 3 4 5

**Disclaimer**

Floor Plan measurements are approximate and are for illustrative purposes only. While we cannot doubt the floor plans accuracy, we make no guarantee, warranty or representation as to the accuracy and completeness of the floor plan