



**16603/177-219 Mitchell Road Erskineville NSW**

2  2  1 

Positioned on the top floor in the newest stage of the complex, this highly prized West facing two bedroom apartment is arguably one of the best floor plans in Sydney Park Village. Featuring additional windows & showcasing light filled interiors + updates throughout with an open plan living & dining area separating the bedrooms & bathrooms, spend nothing or update to taste - take advantage to either occupy or invest in this lucrative opportunity.

Open plan living & dining w/ air con & generous outdoor area

Renovated gas kitchen w/ complex views through the window

Master bedroom w/ WIR, ensuite, air con & balcony access

Spacious second bedroom w/ BIR & Sydney Park hill glimpses

New bathrooms, main w/ tub & separate laundry

**Land Size** : 120 sqm

**View** : <https://www.parkproperties.com.au/sale/nsw/inner-west/erskineville/residential/apartmen>  
t/5748902

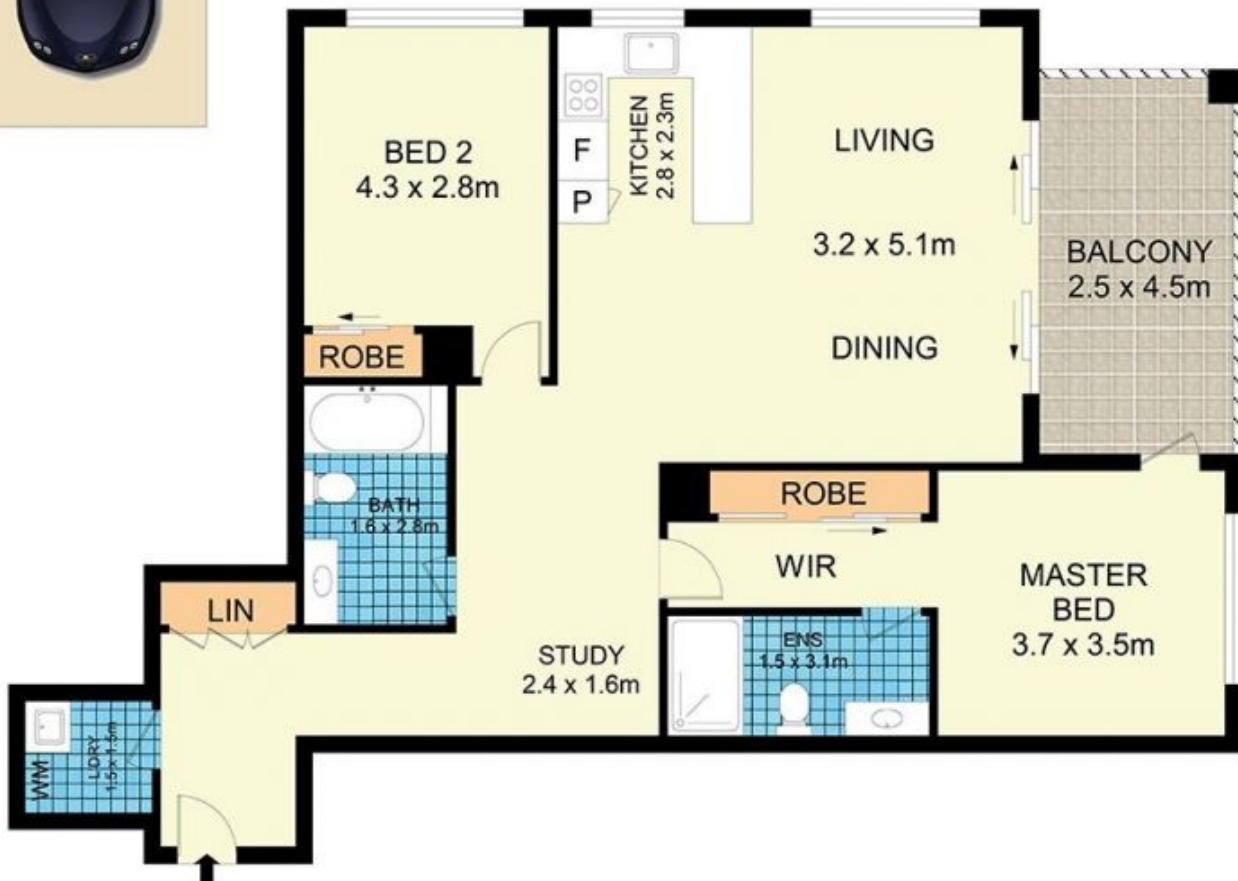


**Melissah McCaffery J P**  
02 9565 5333



**Rebecca Voncina**  
02 9565 5333

CARSPACE



16603/177-219 Mitchell Road, Erskineville

**Disclaimer**

Floor Plan measurements are approximate and are for illustrative purposes only. While we cannot doubt the floor plans accuracy, we make no guarantee, warranty or representation as to the accuracy and completeness of the floor plan.