



11302/177-219 Mitchell Road Erskineville NSW

2  2  1 

This North facing apartment has 124 sqm on title, positioned on the third floor and has a desirable outlook of the lush gardens of Sydney Park Village - perfect for young professionals or investors alike

Land Size : 124 sqm
View : <https://www.parkproperties.com.au/sale/nsw/inner-west/erskineville/residential/apartmen t/5636384>

Open plan living & dining area
North facing entertainers balcony w/ complex views
Well-appointed gas kitchen w/ s/s appliances
Light filled master bedroom w/ WIR, ensuite & balcony access
Spacious second bedroom w/ BIR
Separate internal laundry & plenty of storage
Secure undercover parking & ample visitor parking
Intercom access & 24 hour on-site security

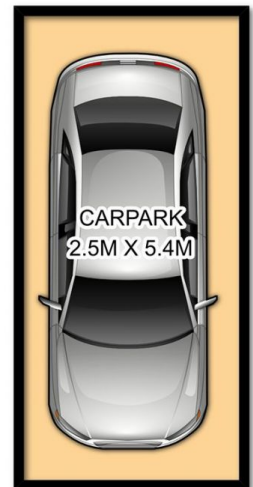
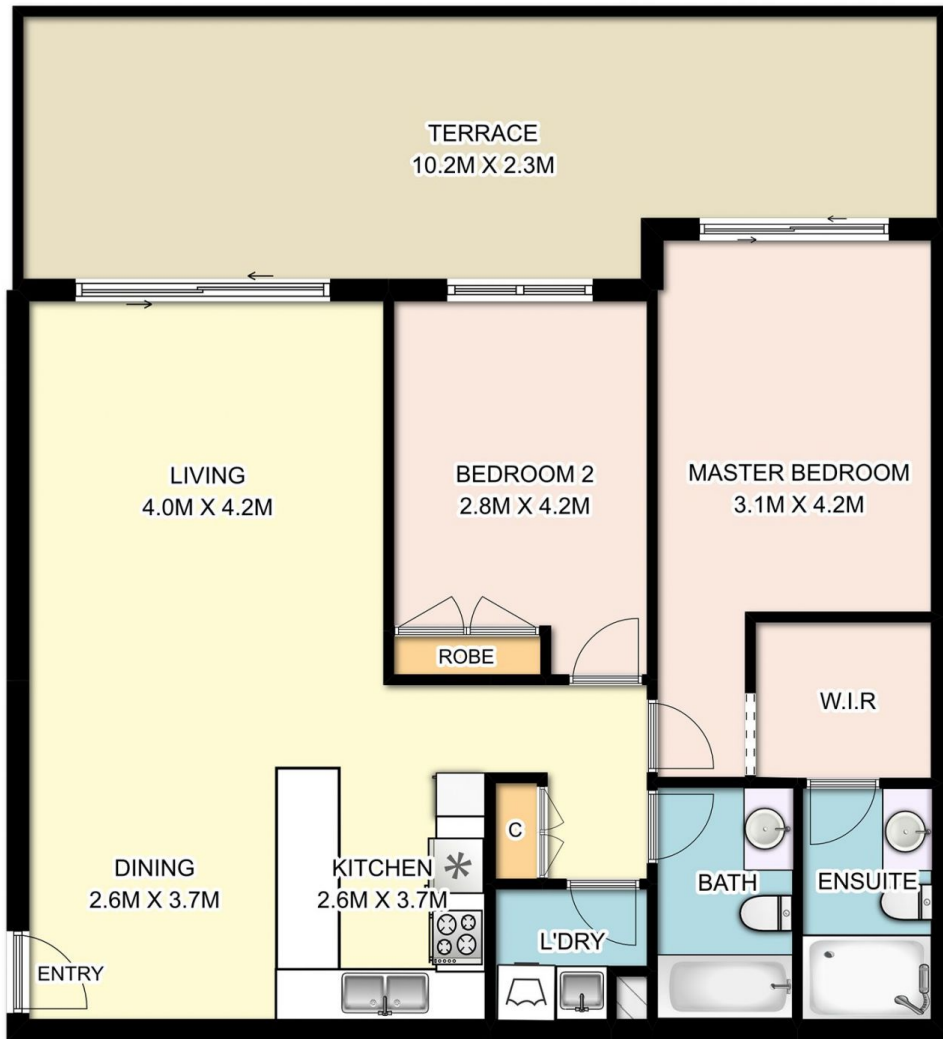
Sitting on the fringe of Sydney's inner west and inner city, its popular location is 5km from the CBD, 5 minute walk to



Rebecca Voncina
02 9565 5333



Melissah McCaffery J P
02 9565 5333



0 1 2 3m
1:75



11302 / 177-219 Mitchell Road, Erskineville

DISCLAIMER: SYDRealEstatePhoto accepts no liability for the accuracy of details contained within our floor plans. The plan scale in meters. Indicative only. Dimensions are approximate. All information contained here in is gathered from sources we believe to be reliable. However we cannot guarantee its accuracy and interested persons should rely on their own enquiries.