



11605/177-219 Mitchell Road ERSKINEVILLE NSW

1  1  1 

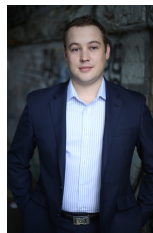
Perched high in the popular Sydney Park Village resort style complex, this park view apartment is set moments from the Inner Wests most coveted conveniences. Boasting generous open plan living, it also features a separate study area and stylish modern finishes throughout.

Generous open plan lounge & dining area
Modern gas kitchen w stainless steel appliances
Spacious bedroom w large built-in robes
Stylish bathroom w tub & internal laundry w dryer
Balcony with views over Sydney Park
Separate study area perfect for home office
Secure car space & ample visitor parking

Placed just steps from the hip Erskineville Village, the eat streets of King and Crown Streets and minutes to The Grounds, Campos, Rosetta Stone Bakery, Bread & Circus,

Price : \$ 530

View : <https://www.parkproperties.com.au/lease/nsw/inner-west/erskineville/residential/apartment/5563707>



Beau McCaffery
02 9565 5333