



**9203/177-219 Mitchell Road Erskineville NSW**

1  1  1 

Nestled amid the oasis-like gardens and resort style enclave of Sydney Park Village, this North facing apartment features an open plan layout with light filled interiors and secure parking - the ideal first home or lucrative investment.

**Land Size** : 72 sqm  
**View** : <https://www.parkproperties.com.au/sale/nsw/inner-west/erskineville/residential/apartmen t/5356243>

Open plan living & dining w/ air-con leads onto the entertainer's balcony  
Master bedroom w/ mirrored BIR  
Well-appointed gas kitchen w/ s/s appliances & storage  
Main bathroom w/ tub & laundry facilities  
Secure undercover parking & ample visitor parking  
Intercom access & 24 hour on-site security

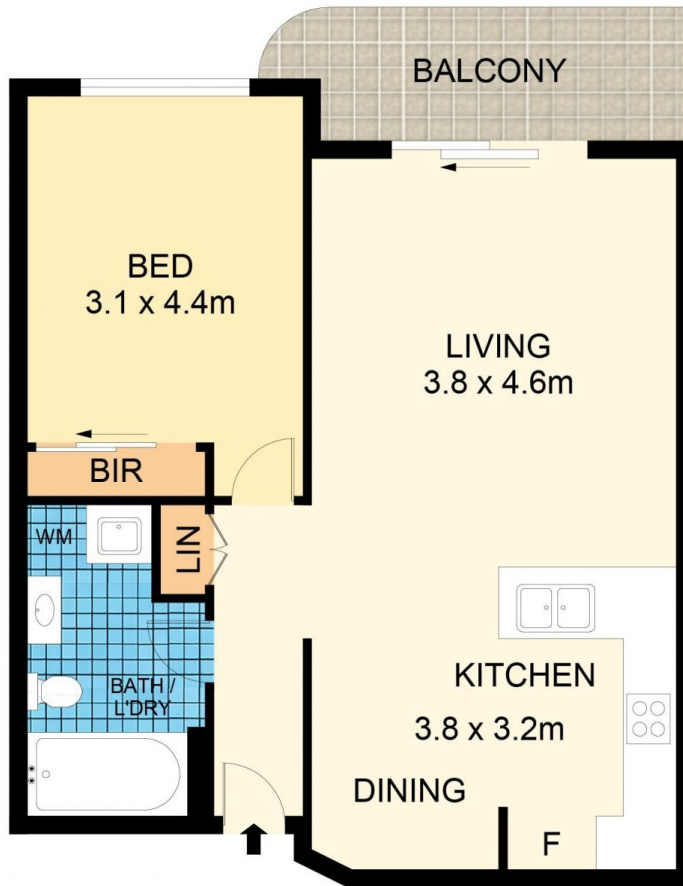


**Michael McCaffery**  
02 9565 5333



**Rebecca Voncina**  
02 9565 5333

Sitting on the fringe of Sydneys inner west and inner city, Erskineville is a hipsters enclave that has all the trimmings of inner-city living. Highly prized for its relaxed yet vibrant



9203/177-219 Mitchell Road, Erskineville



**Disclaimer**

Floor Plan measurements are approximate and are for illustrative purposes only. While we cannot doubt the floor plans accuracy, we make no guarantee, warranty or representation as to the accuracy and completeness of the floor plan.