



7206/177-219 Mitchell Roa Mitchell Road Erskineville NSW

1  1  1 

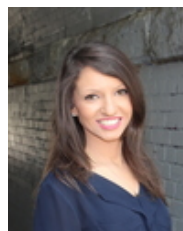
Nestled amid the oasis-like gardens + resort style enclave of Sydney Park Village, this desirable east facing one bedroom apartment is positioned on the 2nd floor w/ 76 sqm on title. Featuring an open plan layout w/ updated + light filled interiors to emphasise space, it promises an effortless lifestyle in a serene resort-style sanctuary - the ideal inner west start perfectly suited for first home buyers or investors alike.

Indulge in the array of resort-style facilities and explore the endless dining and nightlife hubs of Erskineville, Alexandria, Newtown and Sydney Park right on your doorstep.

Generous open plan living & dining area w/ air conditioning
Covered entertainer's balcony w/ desirable east facing

Price : \$ 710,000

View : <https://www.parkproperties.com.au/sale/nsw/inner-west/erskineville/residential/apartment/5326997>



Rebecca Voncina
02 9565 5333



Michael McCaffery
02 9565 5333