



**7505/177-219 Mitchell Road Erskineville NSW**

2  2  1 

Nestled amid the oasis-like gardens + resort style enclave of Sydney Park Village, this luxe 2 bedroom apartment captures the essence of inner-city living. Featuring an open plan layout w/ updated interiors inspires a promising effortless lifestyle in a serene resort-style sanctuary.

**Price** : \$ 900,000

**View** : <https://www.parkproperties.com.au/sale/nsw/inner-west/erskineville/residential/apartment/5307388>

Generous open plan living & dining area  
 Covered balcony w/ complex views  
 Well-appointed gas kitchen w/ s/s appliances & plenty of storage  
 Spacious light filled master bedroom, w/ WIR & ensuite  
 Generous second bedroom w/ BIR  
 Stylish bathroom w/ tub & laundry facilities  
 Secure car space, lift access and visitor parking

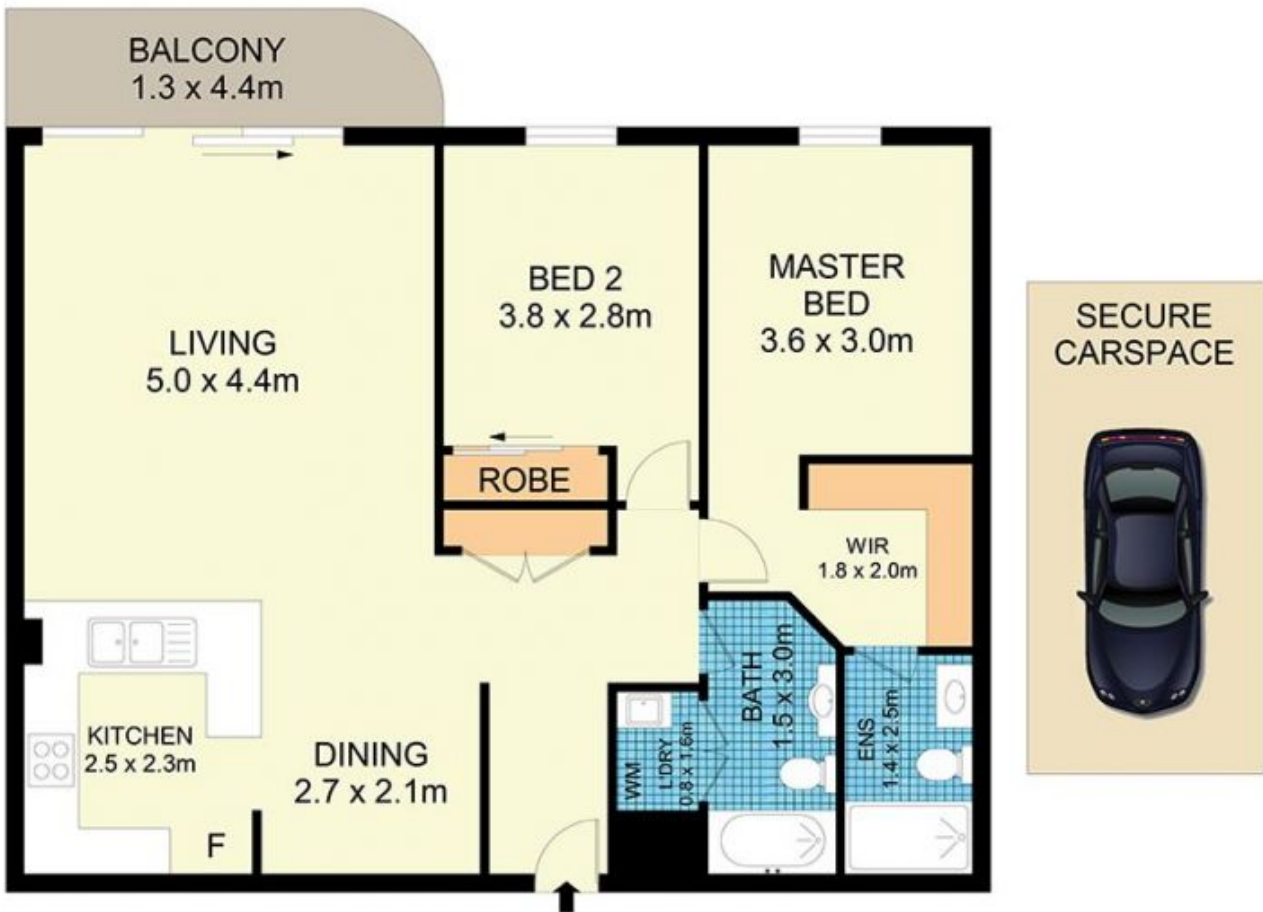


**Melissah McCaffery J P**  
02 9565 5333



**Rebecca Voncina**  
02 9565 5333

Sitting on the fringe of Sydney's inner west and inner city, Erskineville is a hipster's enclave that has all the trimmings



7505/177-29 Mitchella Road, Erskineville

**Disclaimer**

Floor Plan measurements are approximate and are for illustrative purposes only. While we cannot doubt the floor plans accuracy, we make no guarantee, warranty or representation as to the accuracy and completeness of the floor plan.