

3401/177-219 Mitchell Road ERSKINEVILLE NSW

1  1  1 

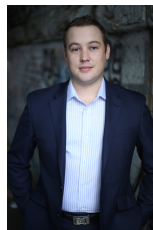
Offering sophistication & tranquillity amid Erskineville's vibrant lifestyle precinct, this contemporary haven is nestled within the acclaimed Sydney Park Village complex promises an idyllic urban lifestyle.

Price : \$ 560

View : <https://www.parkproperties.com.au/lease/nsw/inner-west/erskineville/residential/apartment/5098251>

Apply here: shorturl.at/cvOST

- Generous open plan living & dining area
- Modern gas kitchen w stainless steel appliances
- Spacious bedroom w large built-in robes
- Light filled balcony w private leafy outlook
- Bathroom w tub & internal laundry w dryer
- Secure car space & ample visitor parking



Beau McCaffery
02 9565 5333

Placed just steps from the hip Erskineville Village, the eat streets of King and Crown Streets and minutes to The Grounds, Campos, Rosetta Stone Bakery, Bread & Circus, and Fratelli Fresh, Sydney Park Village is one of the most