



17507/177-219 Mitchell Road ERSKINEVILLE NSW

1  1  1 

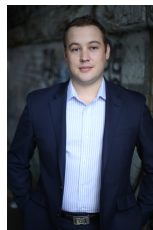
Generous in size and features, this north facing one bedroom apartment boasts light filled, oversized living. Situated in the highly sought after Sydney Park Village complex, it offers a versatile floor plan with stylish finishes and private leafy outlook.

Light filled open plan lounge & dining area
Designer gas kitchen w stainless steel appliances
Large bedroom w built in robes & balcony access
Sunny private entertainers balcony
Stylish bathroom w tub & separate laundry w dryer
Air conditioning & generous storage space
Secure car space, storage cage & visitor parking

Placed just steps from the hip Erskineville Village, the eat streets of King and Crown Streets and minutes to The Grounds, Campos, Rosetta Stone Bakery, Bread & Circus,

Price : \$ 600

View : <https://www.parkproperties.com.au/lease/nsw/inner-west/erskineville/residential/apartment/4988817>



Beau McCaffery
02 9565 5333