



**17609/177-219 Mitchell Road ERSKINEVILLE NSW**

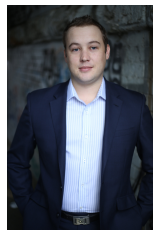
1  1  1 

Located in the popular lifestyle complex Sydney Park Village, this north facing one bedroom apartment with study & parking offers bright and airy open plan living with a generous floor plan & city skyline views.

**Price** : \$ 590

**View** : <https://www.parkproperties.com.au/lease/nsw/inner-west/erskineville/residential/apartment/4866046>

Light filled open plan lounge & dining area  
Gourmet gas kitchen w stainless steel appliances  
Generous bedroom w large built-in robes  
Stylish bathroom w tub & internal laundry w dryer  
Entertainers balcony w city skyline views  
Separate study area perfect for home office  
Air conditioning & generous storage space  
Secure car space & ample visitor parking



**Beau McCaffery**  
**02 9565 5333**

Placed just steps from the hip Erskineville Village, the eat streets of King and Crown Streets and minutes to The Grounds, Campos, Rosetta Stone Bakery, Bread & Circus,