

2502/177-219 Mitchell Road Erskineville NSW

2  2  1 

Offering sophistication & tranquillity amid Erskineville's vibrant lifestyle precinct, this contemporary haven is nestled within the acclaimed Sydney Park Village complex promises an idyllic urban lifestyle. With a desirable elevated position on the fifth floor creates breezy light-filled interiors boasting rare modern comfort with two over-sized bedrooms discreetly set apart. Immerse yourself in an effortless urban lifestyle, perfect for the savvy investor, family or couple that demands quality without compromise.

Price : \$ 770,000
Land Size : 113 sqm
View : <https://www.parkproperties.com.au/sale/nsw/inner-west/erskineville/residential/apartmen/4829149>

Generous open plan living leading onto dual balconies
 Well-appointed gas kitchen w/ s/s appliances & separate laundry

Separate dining area w/ North facing balcony

Master bedroom w/ en-suite & double BIR's

2nd bedroom w/ BIR, both with ceiling fans

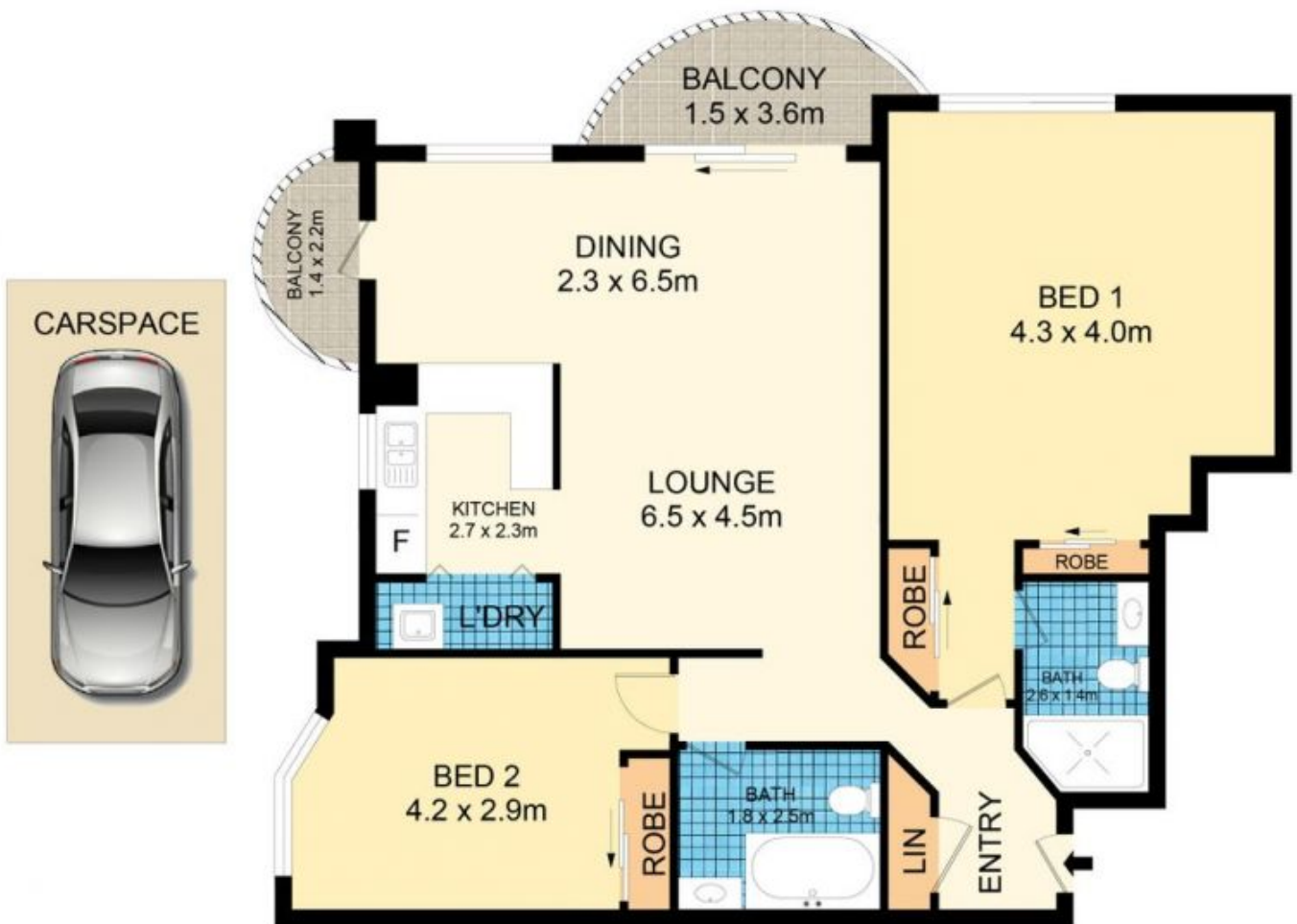
Main bathroom w/ tub & separate linen cupboard



Melissah McCaffery J P
02 9565 5333



Rebecca Voncina
02 9565 5333



2502/177-219 Mitchell Road, Erskineville

Disclaimer

Floor Plan measurements are approximate and are for illustrative purposes only. While we cannot doubt the floor plans accuracy, we make no guarantee, warranty or representation as to the accuracy and completeness of the floor plan