

16607/177-219 Mitchell Road Erskineville NSW

1  1  1 

An unrivaled lifestyle in a fast-paced inner city location + awash with natural light, this highly prized top floor, North facing apartment offers immense privacy with city skyline views. Showcasing updated interiors and a versatile floor plan, spend nothing or update to taste - this entry-level apartment is the perfect Inner West start.

Price : \$ 670,000
Land Size : 55 sqm
View : <https://www.parkproperties.com.au/sale/nsw/inner-west/erskineville/residential/apartmen/t/4806219>

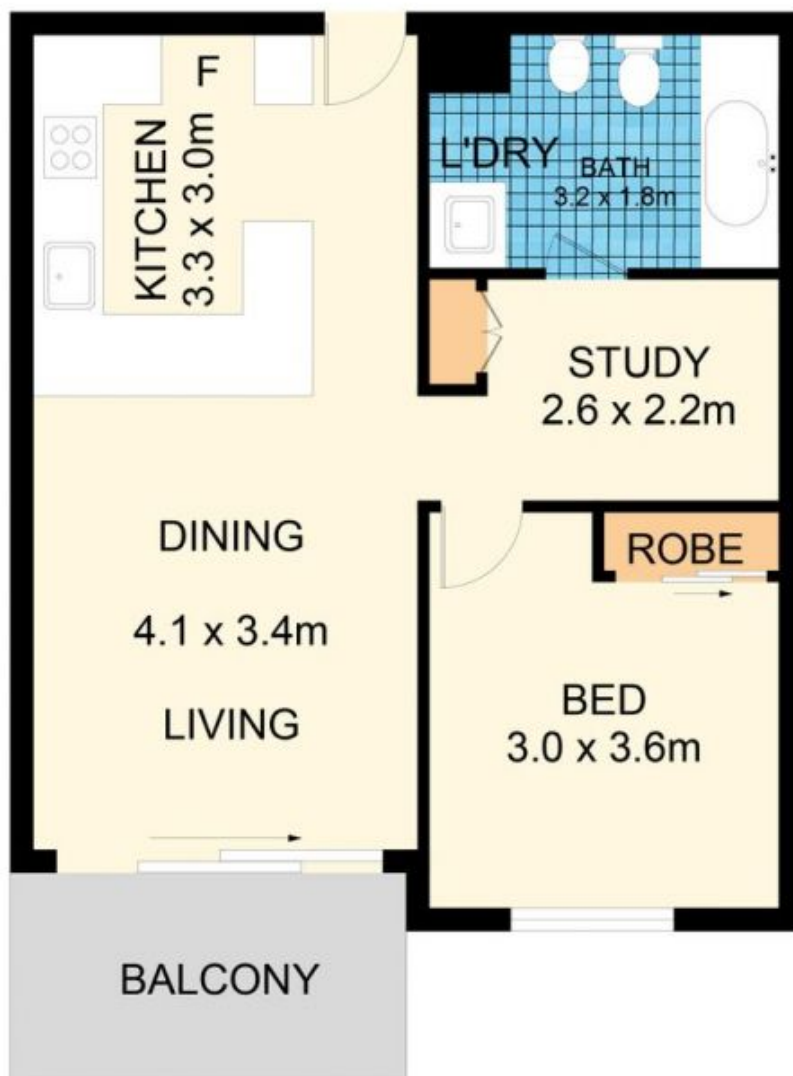
Open living & dining leads onto the balcony capturing the city skyline
Master bedroom w/ BIR
Gas kitchen w/ s/s appliances & storage
Bathroom w/ tub & laundry facilities
Separate study area perfect for guest bedroom, home office, nursery or cellar
Secure undercover parking & ample visitor parking
Intercom access & 24 hour on-site security



Melissah McCaffery J P
02 9565 5333



Rebecca Voncina
02 9565 5333



16607/177-219 Mitchell Road, Erskineville

Disclaimer

Floor Plan measurements are approximate and are for illustrative purposes only. While we cannot doubt the floor plans accuracy, we make no guarantee, warranty or representation as to the accuracy and completeness of the floor plan.