



10309/177-219 Mitchell Road Erskineville NSW

2  2  1 

Showcasing a new statement in urban luxury, this apartment offers the perfect combination of the Erskineville buzz & resort style living. Featuring a generous floor plan with a private outlook over the manicured gardens, this apartment offers 129sqm of low maintenance living.

Price : \$ 790,000
Land Size : 129 sqm
View : <https://www.parkproperties.com.au/sale/nsw/inner-west/erskineville/residential/apartmen/4582255>

North facing entertainer's balcony w/ internal garden views
 Generous open plan lounge & dining area
 Master bedroom w/ WIR, ensuite & balcony access
 Second bedroom w/ BIR
 Well-appointed gas kitchen w/ s/s appliances & plenty of storage
 Stylish bathrooms, main w/ tub
 Separate internal laundry
 Secure car space, lift access and visitor parking

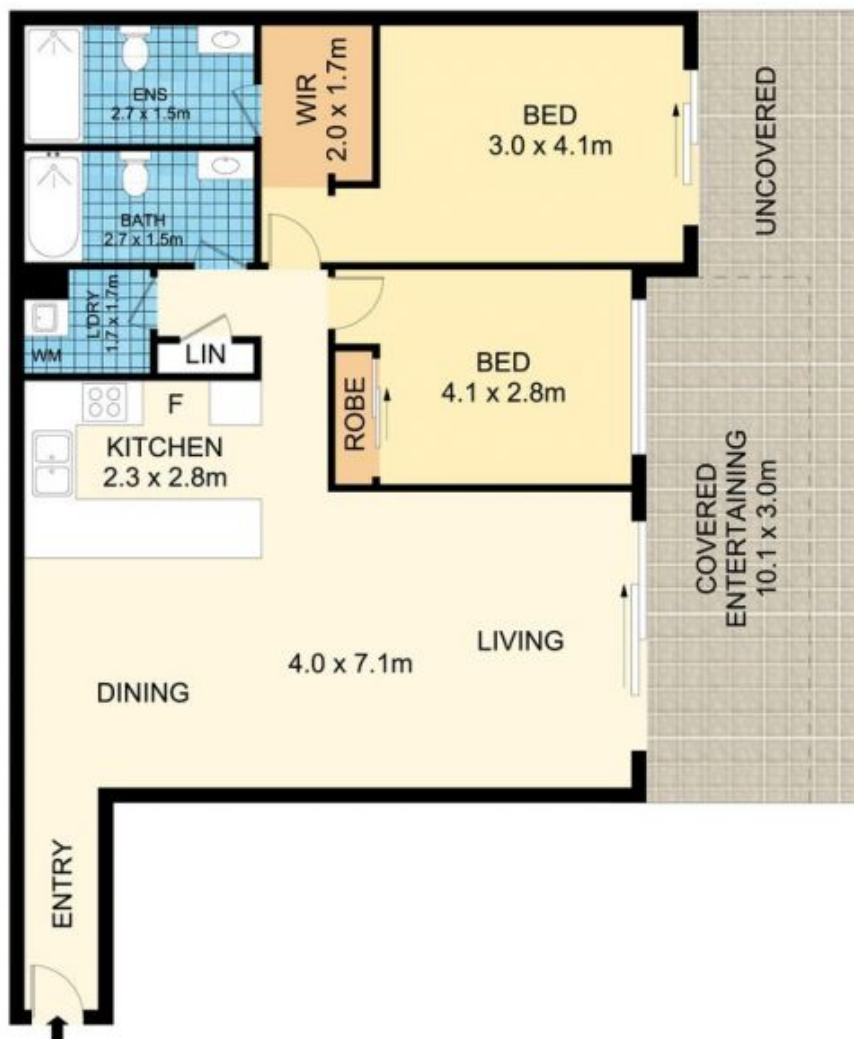
Placed just steps from the hip Erskineville Village, the eat



Michael McCaffery
02 9565 5333



Rebecca Voncina
02 9565 5333



10309/177-219 Mitchell Road, Erskineville



Disclaimer

Floor Plan measurements are approximate and are for illustrative purposes only. While we cannot doubt the floor plans accuracy, we make no guarantee, warranty or representation as to the accuracy and completeness of the floor plan.