



**10310/177-219 Mitchell Road ERSKINEVILLE NSW**

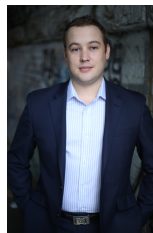
1  1  1 

Located in the highly sought after lifestyle complex Sydney Park Village, this one bedroom apartment is generous in size and features. Offering bright and airy open plan living leading out to a sun drenched entertainers balcony, this apartment is ideal for those seeking space & lifestyle in an urban locale.

**Price** : \$ 600

**View** : <https://www.parkproperties.com.au/lease/nsw/inner-west/erskineville/residential/apartment/4546260>

Large open plan lounge & dining area  
 Designer gas kitchen w stainless steel appliances  
 Spacious bedroom w built-in robes & balcony access  
 Modern bathroom w tub & separate laundry w dryer  
 Sun drenched entertainers balcony w leafy outlook  
 Air conditioning & generous storage space throughout  
 Security car space & ample visitor parking



**Beau McCaffery**  
02 9565 5333

Placed just steps from the hip Erskineville Village, the eat streets of King and Crown Streets and minutes to Pinos,