






11/156 Military Road Neutral Bay NSW

2  2  1 

Located in the heart of Neutral Bay, this North facing 2 bedroom apartment is positioned at the rear of the tranquil "Courtyards? complex. Showcasing a well-appointed floor plan, spacious living areas and full length entertainers balcony all within close proximity to Neutral Bay village and dining precinct. Offering the perfect city home or investment opportunity, enjoy sophistication and convenience central to excellent transportation with frequent buses to the city at your doorstep!

Spacious L-shaped living & dining area w/ high ceilings
North facing full length balcony perfect for entertaining
Spacious kitchen w/ pleasant outlook
Master bedroom w/ WIR & ensuite
Generous 2nd bedroom w/ BIR
Main bathroom w/ tub, internal laundry & separate linen cupboard

Land Size : 121 sqm

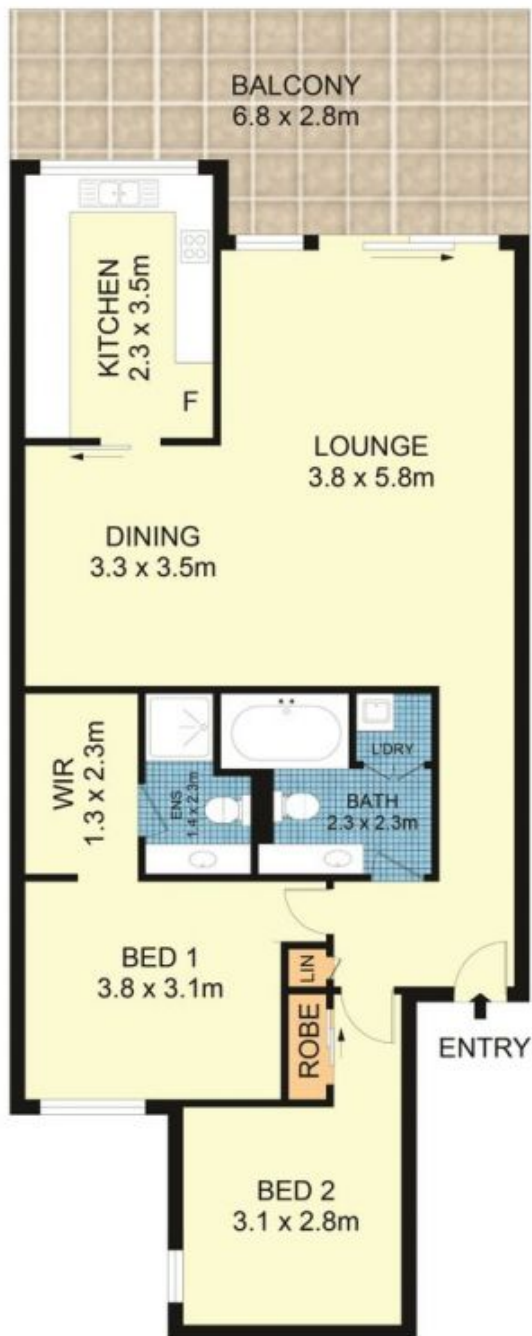
View : <https://www.parkproperties.com.au/sale/nsw/north-shore-lower/neutral-bay/residential/apartment/4429135>



Michael McCaffery
02 9565 5333



Rebecca Voncina
02 9565 5333



Property size: 121 SQM total
102 SQM internal (incl. balcony)
19 SQM parking

11/156 Military Road, Neutral Bay



Disclaimer

Floor Plan measurements are approximate and are for illustrative purposes only. While we cannot doubt the floor plans accuracy, we make no guarantee, warranty or representation as to the accuracy and completeness of the floor plan