



B501/24-26 Point Street PYRMONT NSW

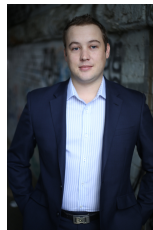
1  1  1 

Offering a desirable lifestyle address in the exclusive Watermark complex, this spacious apartment provides a city fringe retreat of style, quality and convenience. Meticulously designed it is further enhanced with a light filled aspect and generous open floor plan.

Price : \$ 640

View : <https://www.parkproperties.com.au/lease/nsw/sydney-city/pyrmont/residential/apartment/4008903>

- Generous open plan lounge & dining area
- Designer gas kitchen w stainless steel appliances
- Spacious bedroom w large built-in robes
- Stylish bathroom & separate laundry w dryer
- Private balcony area w leafy complex views
- Air conditioning & ample storage throughout
- Intercom access & undercover secure car space
- Complex facilities include swimming pool & gym



Beau McCaffery
02 9565 5333

With stunning common garden areas this apartment is ideally located close to Pyrmont's vibrant harbor front of