



14205/177-219 Mitchell Road ERSKINEVILLE NSW

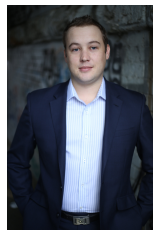
1  1  1 

Designed for laid back urban living, this one bedroom apartment plus study is perfectly positioned in the desirable resort style complex Sydney Park Village. Boasting a generous free flowing floorplan with stylish finishes, this property features a great entertainer's layout and quiet leafy outlook.

Price : \$ 600

View : <https://www.parkproperties.com.au/lease/nsw/inner-west/erskineville/residential/apartment/3974896>

Generous open plan lounge & dining area
Light filled entertainers balcony w leafy outlook
Designer gas kitchen w stainless steel appliances
Large bedroom w built-in robes & balcony access
Stylish bathroom w tub & internal laundry w dryer
Separate study area & generous storage space
Secure car space & ample visitor parking



Beau McCaffery
02 9565 5333

Placed just steps from the hip Erskineville Village, the eat streets of King and Crown Streets and minutes to The