



3209/177-219 Mitchell Road Erskineville NSW

2  2  1 

Be amazed by this unique warehouse inspired apartment with polished concrete floors, industrial fixtures and fully renovated kitchen and bathrooms. Set within the quiet lush gardens of the highly sought-after 'Sydney Park Village' complex, this two bedroom apartment offers a versatile open plan layout coupled with a large outdoor courtyard. Idyllic resort style living at its best, this is a rare opportunity to own an unsurpassable slice of the inner west.

Spacious living & dining areas leading to the courtyard
Fully renovated gas kitchen w/ s/s appliances
Large master bedroom w/ BIR, en-suite & study
Renovated main bathroom w/ tub & separate laundry
Expansive entertainers courtyard w /timber decking
Secure car space, visitor parking & 24/7 on-site security

Placed just steps from the hip Erskineville Village, the eat

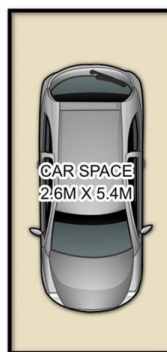
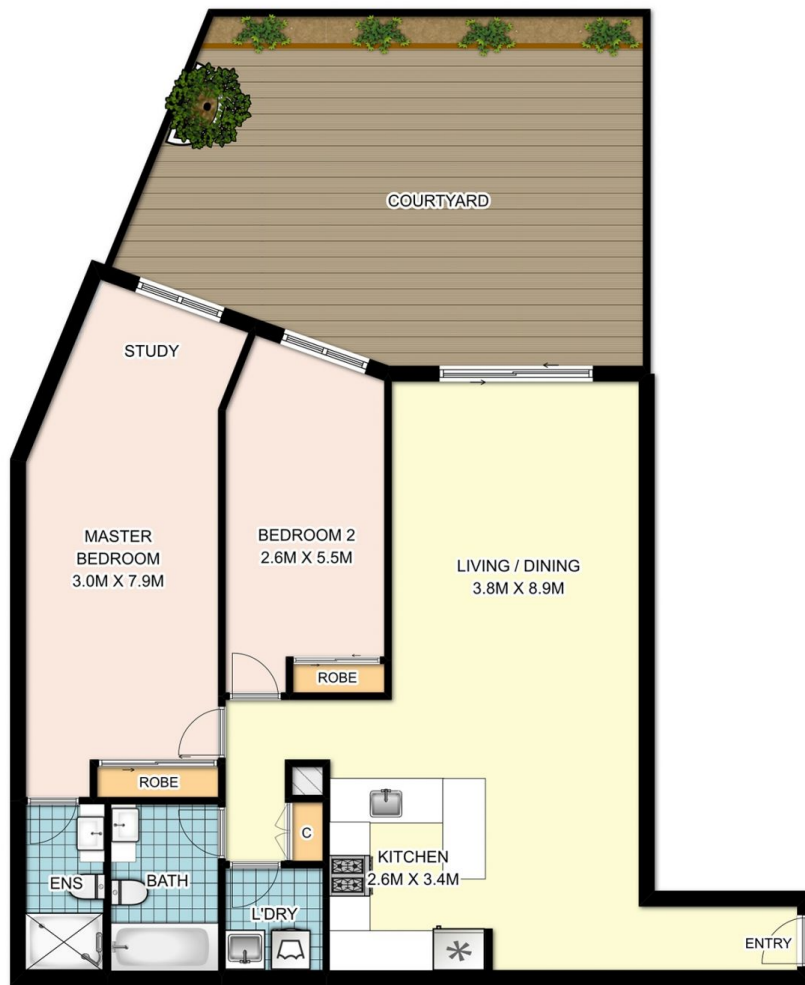
Price : \$ 1,030,000
Land Size : 143 sqm
View : <https://www.parkproperties.com.au/sale/nsw/inner-west/erskineville/residential/apartmen/t/3934479>



Michael McCaffery
02 9565 5333



Melissah McCaffery J P
02 9565 5333



0 1 2 3m
1:75



3209 / 177-219 Mitchell Road, Erskineville

DISCLAIMER: SYDRealEstatePhoto accepts no liability for the accuracy of details contained within our floor plans. The plan scale in meters. Indicative only. Dimensions are approximate. All information contained here in is gathered from sources we believe to be reliable. However we cannot guarantee its accuracy and interested persons should rely on their own enquiries.