



6705/177-219 Mitchell Road Erskineville NSW

2  2  1 

Located in the heart of Erskineville's vibrant village culture, this naturally light filled apartment offers two levels of spacious open plan living situated in a highly desirable top floor position. Showcasing an over-sized floor plan with north facing city views, delve and immerse yourself within this fantastic development.

Price : \$ 1,060,000
Land Size : 126 sqm
View : <https://www.parkproperties.com.au/sale/nsw/inner-west/erskineville/residential/apartmen>
 t/3855963

Spacious open plan lounge and dining areas
 Sun drenched entertainers balcony w/ city views
 Well-appointed gas kitchen w/ dishwasher
 Two double sized bedrooms w/ built-in robes
 Separate internal laundry w/ dryer and storage
 Two full bathrooms plus a guest powder room
 Undercover secure car space & visitor parking

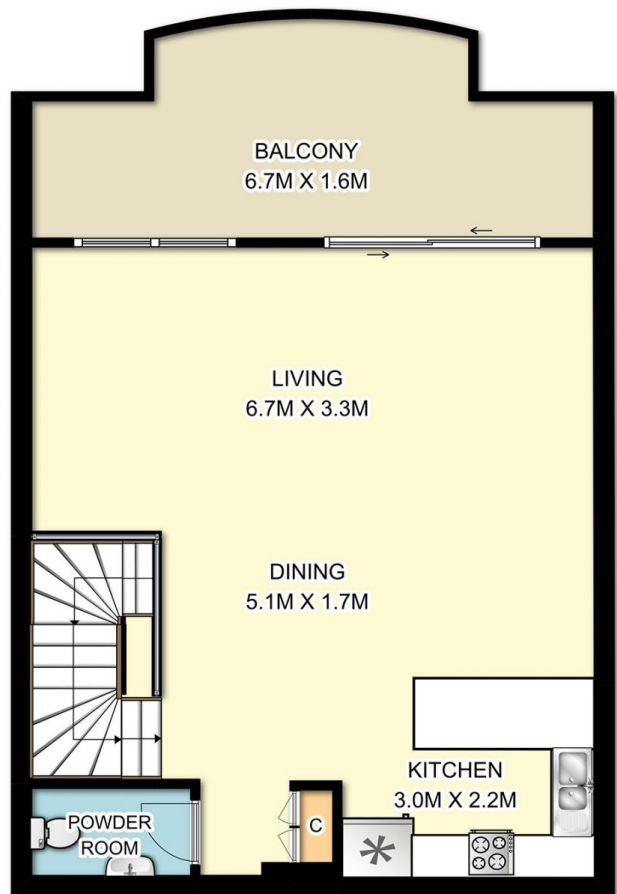
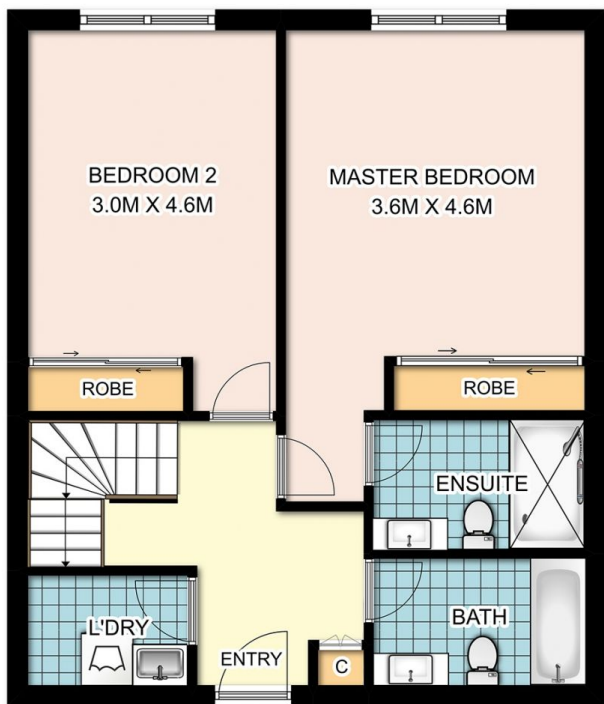
Placed just steps from the hip Erskineville Village, the eat streets of King and Crown Streets and minutes to The



Michael McCaffery
02 9565 5333



Melissah McCaffery J P
02 9565 5333



CAR SPACE

0 1 2 3m
1:75



6705 / 177-219 Mitchell Road, Erskineville

DISCLAIMER: SYDRealEstatePhoto accepts no liability for the accuracy of details contained within our floor plans. The plan scale in meters. Indicative only. Dimensions are approximate. All information contained here in is gathered from sources we believe to be reliable. However we cannot guarantee its accuracy and interested persons should rely on their own enquiries.