



710/242 Elizabeth Street Surry Hills NSW

1  1 

Located in the prestigious Excelsior building this expansive 71 sqm one bedroom modern security apartment offers contemporary living in the heart of the CBD. Just a short stroll to Central Station, China Town, the thriving Surry Hills precinct and the CBD.

Full width entertaining terrace w/ district views
Granite kitchen w/ stainless steel appliances & dishwasher
Open plan living dining area w/ balcony access
Large bedroom w/ built in robe & balcony access
Designer Bathroom w/ bath & separate laundry room.
New carpet & freshly painted w/ intercom security

The Excelsior building boasts resort style facilities including on site building manager, Indoor pool, sauna, gym and roof top entertaining area with 360 degree city and district views. All this moments away from cafes, shops, bars and

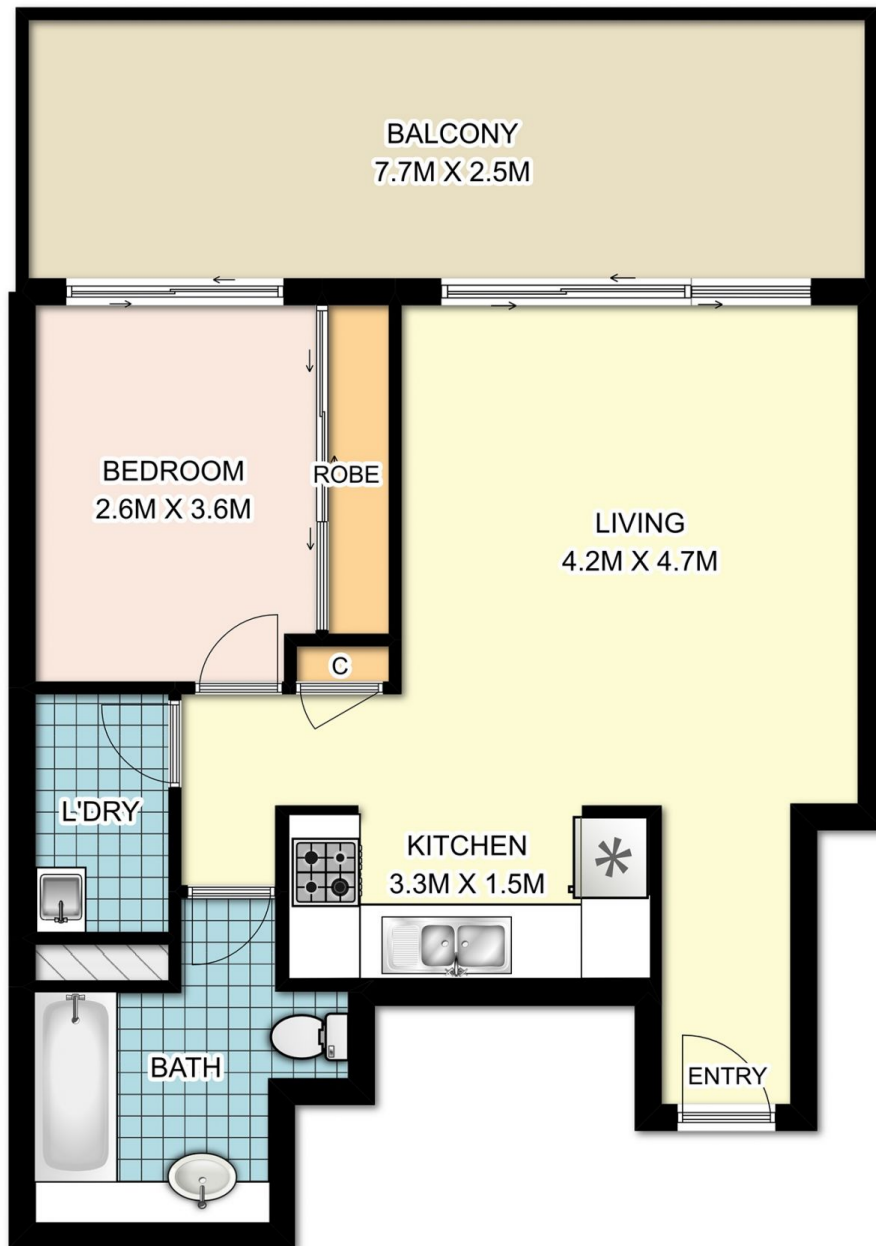
Price : \$ 738,000
Land Size : 71 sqm
View : <https://www.parkproperties.com.au/sale/nsw/eastern-suburbs/surry-hills/residential/apartment/3772537>



Michael McCaffery
02 9565 5333



Melissah McCaffery J P
02 9565 5333



0 1 2 3m
1:75



710 / 242 Elizabeth Street, Surry Hills

DISCLAIMER: SYDRealEstatePhoto accepts no liability for the accuracy of details contained within our floor plans. The plan scale in meters. Indicative only. Dimensions are approximate. All information contained here in is gathered from sources we believe to be reliable. However we cannot guarantee its accuracy and interested persons should rely on their own enquiries.