

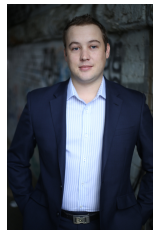
92/2-4 Coulson Street ERSKINEVILLE NSW

1  1 

Located in the highly sought after Verve complex, this executive one bedroom apartment has been architecturally designed by Turner & Associates. Showcasing a generous layout with modern finishes and an ideal light filled aspect, this apartment is a great option for people seeking an easy care property in a superb lifestyle location.

Price : \$ 600
View : <https://www.parkproperties.com.au/lease/nsw/inner-west/erskineville/residential/apartment/3568970>

- Light-filled open plan lounge & dining area
- Designer gas kitchen w stainless steel appliances
- Entertainers balcony w leafy outlook
- Double bedroom w large built-in robes
- Stylish bathroom w internal laundry & dryer
- Air conditioning & generous storage space
- Secure building w video intercom & lift access



Beau McCaffery
02 9565 5333

This stylishly presented residence is further enhanced by its highly desirable location within moments' walk to