



13201/177-219 Mitchell Road Erskineville NSW

1  1  1 

This one bedroom plus study apartment encompasses the essence and convenience of urban living. Boasting resort style facilities, close proximity to transport links and inner west charm, this city fringe pad offers a rare opportunity to purchase in this tightly held complex.

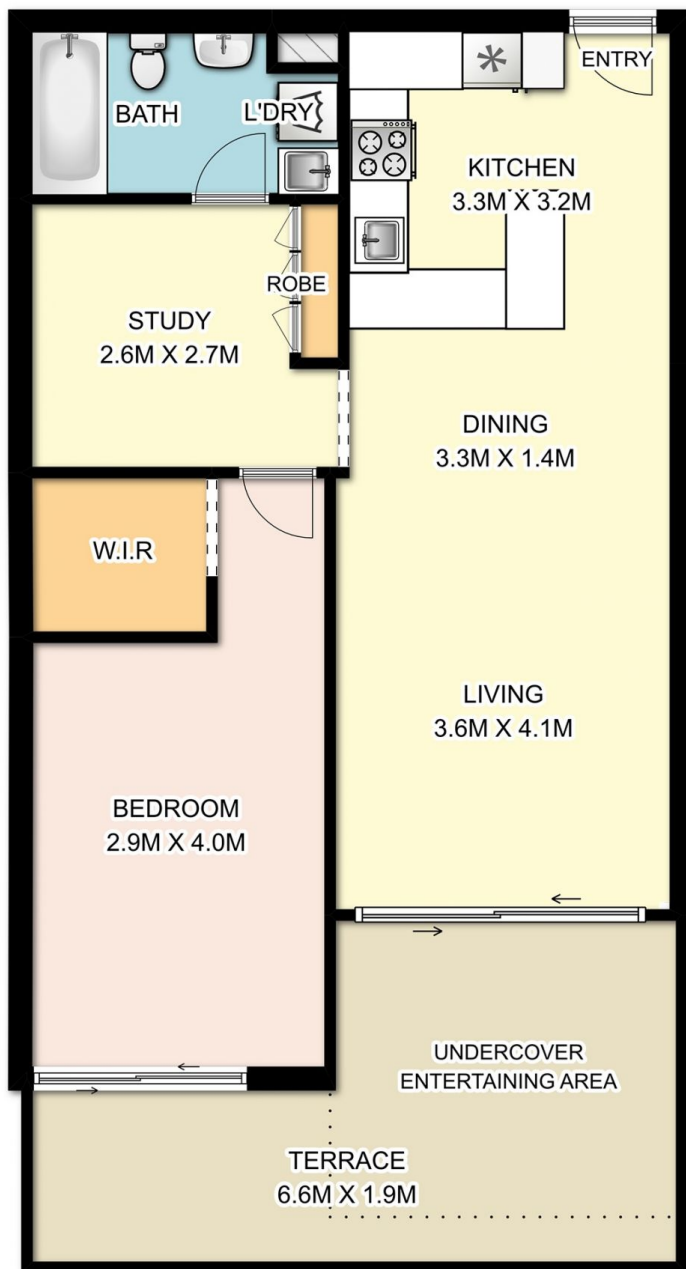
North facing entertainers terrace w/ internal views
Spacious open plan lounge & dining w/ air conditioning
Modern gas kitchen w/ s/s appliances
Bedroom w/ WIR & terrace access
Separate study, perfect for home office or nursery
Full bathroom w/ laundry facilities
Secure car space, video intercom, lift access & visitor parking
Total levies \$1214.73 pq

Placed just steps from the hip Erskineville Village, the eat

Price : \$ 743,000
Land Size : 95 sqm
View : <https://www.parkproperties.com.au/sale/nsw/inner-west/erskineville/residential/apartmen/3547303>



Melissah McCaffery J P
02 9565 5333



0 1 2 3m
1:75



13201 / 177-219 Mitchell Road, Erskineville

DISCLAIMER: SYDRealEstatePhoto accepts no liability for the accuracy of details contained within our floor plans. The plan scale in meters. Indicative only. Dimensions are approximate. All information contained here in is gathered from sources we believe to be reliable. However we cannot guarantee its accuracy and interested persons should rely on their own enquiries.