



**16307/177-219 Mitchell Road ERSKINEVILLE NSW**

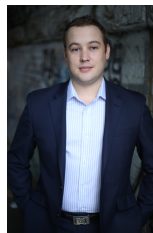
1  1  1 

Generous in size and features, this north facing one bedroom apartment plus study boasts light filled, oversized living. Situated in the highly sought after Sydney Park Village complex, it offers a versatile floor plan with stylish finishes and private leafy outlook.

**Price** : \$ 630

**View** : <https://www.parkproperties.com.au/lease/nsw/inner-west/erskineville/residential/apartment/3476101>

- Light filled open plan lounge & dining area
- Gourmet gas kitchen w stainless steel appliances
- Large bedroom w built in robes & balcony access
- Private entertainers balcony w leafy outlook
- Stylish bathroom w tub & internal laundry w dryer
- Separate study w built-in cabinetry perfect for home office
- New carpet, paint & generous storage space
- Secure car space & ample visitor parking



**Beau McCaffery**  
**02 9565 5333**

Placed just steps from the hip Erskineville Village, the eat streets of King and Crown Streets and minutes to The