



**9/6A Grosvenor Street CROYDON NSW**

2  1  1 

Ideally positioned in the heart of Croydon, this two bedroom security apartment with parking features a generous light filled open floor plan and stylish modern finishes. Situated only moments from Croydon train station, primary school, shops & cafes, this apartment is smartly priced making it an attractive and affordable rental.

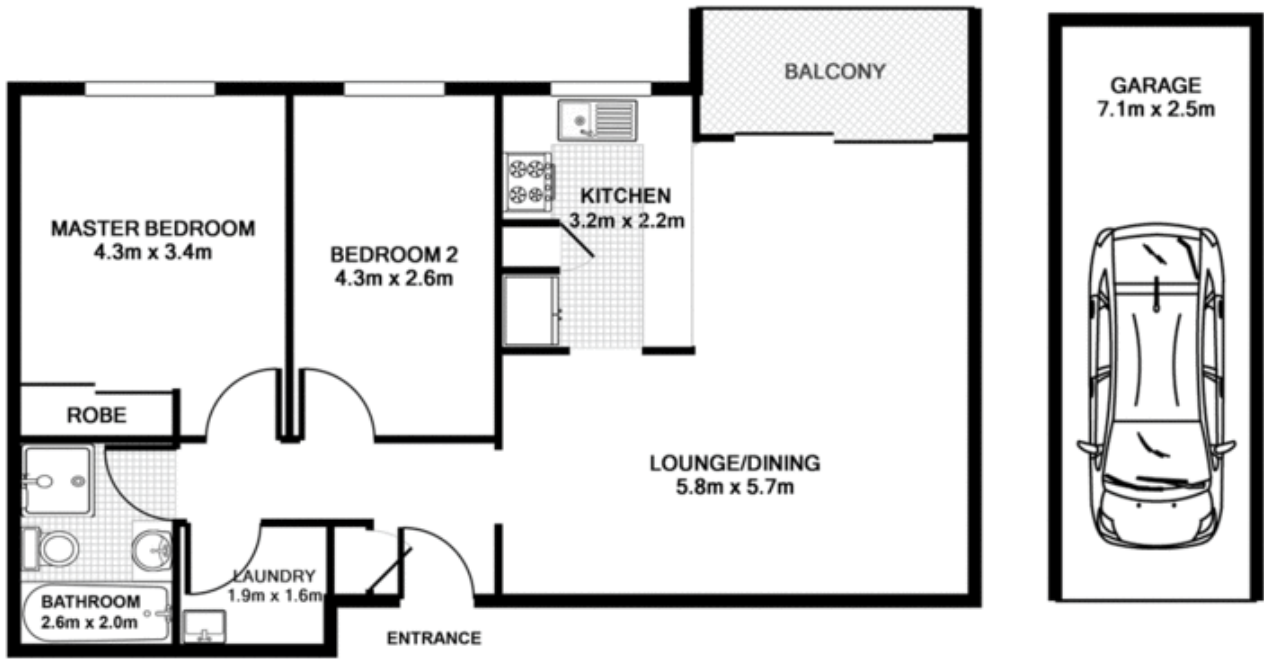
**Price** : \$ 525

**View** : <https://www.parkproperties.com.au/lease/nsw/inner-west/croydon/residential/apartment/3438809>

- Light filled open plan lounge & dining area
- Modern kitchen w stainless steel appliances
- Generous balcony w leafy outlook
- Well-appointed bedrooms, main with built-in robes
- Bathroom w tub & internal laundry w dryer
- Security intercom access & separate garage car space



**Beau McCaffery**  
**02 9565 5333**



**9/6a Grosvenor St, Croydon**

PLANS SHOWN ARE ONLY INDICATIVE OF LAYOUT.  
DIMENSIONS ARE APPROXIMATE.

TOTAL APPROX FLOOR AREA 100SQM

