



15302/177-219 Mitchell Road ERSKINEVILLE NSW

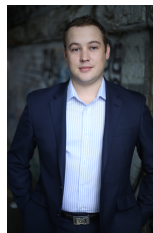
1  1  1 

Modern, bright and generous in size, this third floor one bedroom apartment with study & secure parking overlooks the landscaped gardens, swimming pool and tennis courts of Sydney Park Village.

Price : \$ 590

View : <https://www.parkproperties.com.au/lease/nsw/inner-west/erskineville/residential/apartment/3320095>

Generous open plan lounge & dining area
Full length entertainers balcony w complex views
Designer gas kitchen w stainless steel appliances
Spacious bedroom w built in robes & balcony access
Stylish bathroom w tub & internal laundry w dryer
Separate study area perfect for home office
Secure car space & ample visitor parking



Beau McCaffery
02 9565 5333

Placed just steps from the hip Erskineville Village, the eat streets of King and Crown Streets and minutes to The Grounds, Campos, Rosetta Stone Bakery, Bread & Circus, and Fratelli Fresh, Sydney Park Village is one of the most